

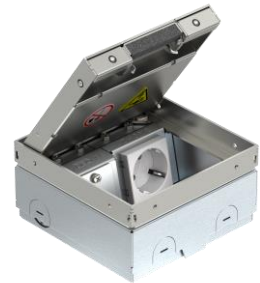
October 2022

Seite 1 von 2

UDHOME-ONE Floor Socket

The smallest and most sustainable member of the UDHOME product family

The UDHOME floor boxes and floor sockets bring power and data to precisely where they're needed, regardless of any other under-floor systems. The UDHOME-ONE is the latest, and indeed smallest, member of the product family. It is sure to impress with its extremely flat, sustainable design and ease of use.



The UDHOME-ONE floor socket can be integrated into the floor in the smallest space – mounted directly onto the unfinished floor (RFB), it is connected to flexible installation pipes and then worked flush into the screed. Its small external dimensions of 140 x 140 mm and low minimum installation depth from 75 mm make it extremely flat and suitable for low screed floors. Thanks to the integrated levelling mechanism, the UDHOME-ONE can also be installed in floors of up to 100 mm high.

The small floor socket is not only space-saving, it is also resilient – it offers a high load-bearing capacity of up to 15 kN for large surface areas and 3 kN for smaller ones.

Flexible and certified



The UDHOME-ONE can be equipped either with one data and one power connection or with two power connections. The power connection is made using OBO's own Modul 45 series. The cover can be closed even when the plug is inserted, so the floor socket can be inte-

grated discreetly into the room decor.

The smallest floor socket in the UDHOME range easily separates power current and data and is VDE-certified to that effect.

Two cover versions for sophisticated designs

As with all OBO floor sockets, the UDHOME-ONE combines maximum functionality with a highly sophisticated design. The design aspect of the small floor socket is catered for with two different cover variants which can be easily exchanged at any time. The cover is available with both floor covering recess and with decorative plate. No matter which variant is used, the height of the floor socket does not need to be adjusted or re-levelled. Cables are run via a cord outlet integrated into the cover. In addition, all frequently touched edges in the interior have been machined and smoothed,

For further information:

Fabienne Wolf-Kunke
Sales Marketing

OBO Bettermann Vertrieb Deutschland GmbH & Co. KG
Langer Brauck
58640 Iserlohn, Deutschland

Tel.: +49 2371 7899-2241
E-Mail: wolf-kunke.fabienne@obo.de
www.obo.de

October 2022

Seite 2 von 2

which significantly reduces the risk of injury as well as the risk of damage to cables. As such the UDHOME-ONE is setting new standards in user comfort.

The floor socket is available in stainless steel and brass. The two pre-mounted device supports are always made of stainless steel.

Sustainable and energy-efficient

The UDHOME-ONE is convincingly sustainable too – its low installation depth means it can be built into low screeds. This ensures more efficient heating, as underfloor systems can heat up the floor more quickly using far less energy. Moreover, the UDHOME-ONE is made completely using energy from renewable sources.

For further information:

Fabienne Wolf-Kunke
Sales Marketing

OBO Bettermann Vertrieb Deutsch-
land GmbH & Co. KG
Langer Brauck
58640 Iserlohn, Deutschland

Tel.: +49 2371 7899-2241
E-Mail: wolf-kunke.fabienne@obo.de
www.obo.de