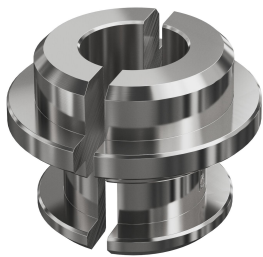


Technical data sheet

Potential connection for isCon® Basic and Professional in the isFang IN insulated air-termination rod
Item number: 5408032



- For the isCon® Basic and isCon® Professional conductor
- To avoid surface discharges
- Installation takes place in the insulated air-termination rod, type isFang IN



Alu Aluminium

Master data

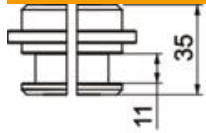
Item number	5408032
Type	isCon IN PAE 2
Description 1	Potential connection
Description 2	for isCon Basic + Pro
Manufacturer	OBO
Dimension	Ø20mm
Material	Aluminium
Smallest sales unit	1
Unit of quantity	Piece
Weight	5.9 kg
Weight unit	kg/100 pc.
CO2 Footprint (GWP) Cradle-to-Gate	1,5005 kg CO2e / 1 Piece

Technical data sheet

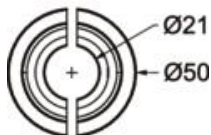
Potential connection for isCon® Basic and Professional in the isFang IN insulated air-termination rod
Item number: 5408032



Dimensions



Dimension d min.	20 mm
Dimension d Ø	49.9 mm
Dimension L	35 mm



Technical data

Type of fastening screw	Hexagonal bolt
Type of accessory	Connection element
Suitable for connection	Miscellaneous
Accessories	yes
Spare part	no