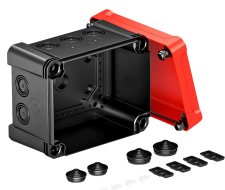


Technical data sheet

Junction box X 10

Item number: 2005156



Junction box for the connection of cables and lines indoors and in outdoor areas. Rectangular design with knock-out entries. Suitable for wall and ceiling mounting with the option to fasten outside, inside or to mount via the corner domes. Particularly impact resistant with IK09. Cover with quick lock, sealable. Made from halogen-free and UV-resistant materials.

Junction box according to DIN EN 60670. Flame-resistant to DIN EN 60695/2/11, test temperature 650 °C. Impact resistance IK09 according to DIN EN 50102. Protection rating IP67 according to DIN EN 60529.

The base is black and the cover is signal red with black fastening elements.



PC Polycarbonate

Master data

Item number	2005156
Type	X10 SW-RO
Description 1	Junction box
Description 2	with red cover
Manufacturer	OBO
Dimension	190x150x125
Colour	Black / red
Material	Polycarbonate
Smallest sales unit	1
Unit of quantity	Piece
Weight	59.2 kg
Weight unit	kg/100 pc.
CO2 Footprint (GWP) Cradle-to-Gate	2,2543 kg COe / 1 Piece

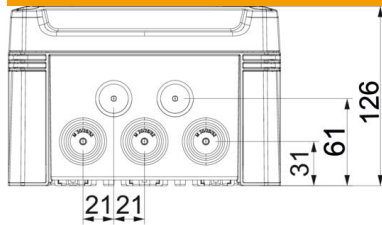
Technical data sheet

Junction box X 10

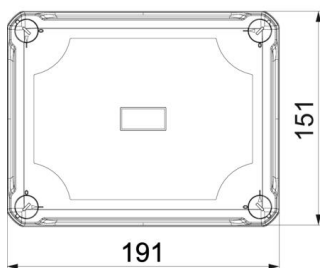
Item number: 2005156



Dimensions



Length	191 mm
Width	151 mm
Height	126 mm



Technical data

Expandable	yes
No. of entries	10
Type of entry	Cuttable stepped membrane
Type of housing penetration	Pre-marking
Measured insulation voltage V_i	750 V
Equipment	Without
Cover	Not transparent
Cover fastening	Screwed
Entry from rear	no
Entries	10 x Ø20/25/32
Explosion-tested version	no
Flame-resistant	acc. to VDE 0471/DIN 695 Part 2-1, test temperature 650°C
Shape	Rectangular
Fibre-glass reinforced	yes
Halogen-free	yes
Clear internal dimensions	177x137x110 mm
Max. Conductor cross-section	10 mm ²
With screening	no
with lid	yes
Mounting type	Wall/ceiling mounting
Nominal cross-section, max.	10 mm ²
Nominal cross-section, min.	4 mm ²
Nominal voltage	750 V
Sealable	yes
Impact-resistant	yes
Protection rating	IP67
Protection rating IK code	IK09
Permitted temperature range, max.	60 °C

Technical data sheet

Junction box X 10

Item number: 2005156



Technical data

Permitted temperature range, min.	-5 °C
Transparent lid	no
Weatherproof	yes