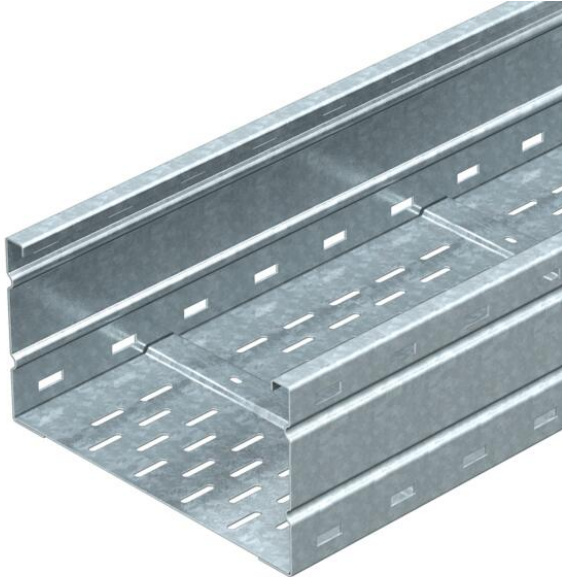


# Technical data sheet

## Wide span cable tray WKSG 160 FS

Item number: 6098517



Wide span cable tray system, perforated, with a side height of 160 mm.  
Straight connectors of type WRV 160 should be ordered separately and in the appropriate quantity.  
Magnetic shield insulation without cover 20 dB, with cover 50 dB.



|    |                  |
|----|------------------|
| St | Steel            |
| FS | Strip galvanized |

### Master data

|                                   |                          |
|-----------------------------------|--------------------------|
| Item number                       | 6098517                  |
| Description 1                     | Wide span cable tray     |
| Description 2                     | perforated, floor beaded |
| Manufacturer                      | OBO                      |
| Dimension                         | 160x600x6000             |
| Colour                            | zinc                     |
| Material                          | Steel                    |
| Surface                           | Strip galvanized         |
| Surface standard                  | DIN EN 10346             |
| Smallest sales unit               | 6                        |
| Unit of quantity                  | Metre                    |
| Weight                            | 1324.5 kg                |
| Weight unit                       | kg/100 m                 |
| CO Footprint (GWP) Cradle-to-Gate | 31,8754 kg COe / 1 Meter |

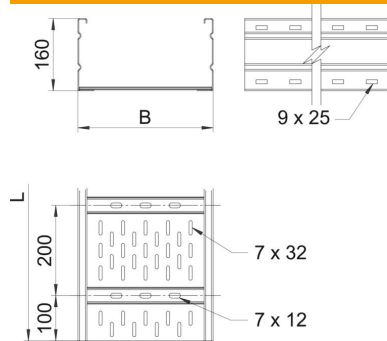
# Technical data sheet

## Wide span cable tray WKSG 160 FS

Item number: 6098517



### Dimensions



|                 |           |
|-----------------|-----------|
| Dimension       | 160 x 600 |
| Length          | 6,000 mm  |
| Width           | 600 mm    |
| Height          | 160 mm    |
| Plate thickness | 2 mm      |
| Dimension B     | 600 mm    |
| Dimension L     | 6,000 mm  |

### Technical data

|  |                       |
|--|-----------------------|
| Connector version                        | Without connectors    |
| Mounting system fastening type           | Floor Ceiling Wall    |
| Maintain electrical functions            | no                    |
| Mounting perforation in base             | yes                   |
| Usable cross-section                     | 914 cm <sup>2</sup>   |
| Usable cross-section                     | 91400 mm <sup>2</sup> |
| Rustproof steel, pickled                 | no                    |
| Side perforation                         | yes                   |
| Wide-span version                        | yes                   |
| Magnetic shield insulation with cover    | 50 dB                 |
| Magnetic shield insulation without cover | 20 dB                 |
| Usable length                            | 6000 mm               |
| Type of connector, cable support system  | Screwed               |

# Technical data sheet

## Wide span cable tray WKSG 160 FS

Item number: 6098517



### Loads

Insertable support spacings, min. 3 m

Insertable support spacings, max. 8 m

Support spacing 3.0 m 3 kN/m

Support spacing 3.5 m 2.73 kN/m

Support spacing 4.0 m 2.5 kN/m

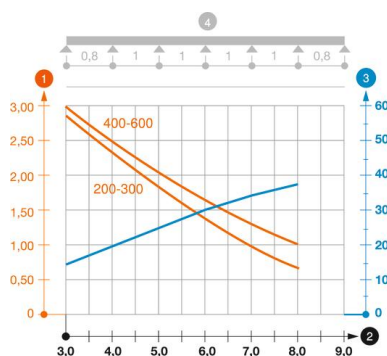
Support spacing 4.5 m 2.24 kN/m

Support spacing 5.0 m 2 kN/m

Support spacing 6.0 m 1.6 kN/m

Support spacing 7.0 m 1.3 kN/m

Support spacing 8.0 m 1 kN/m



### Load diagram, wide span cable tray, type WKSG 160

- 1 Permitted cable tray/ladder load in kN/m without man load
- 2 Support width in m
- 3 Rail bend in mm at permitted kN/m
- 4 Load scheme during testing
- Load curve with cable tray/ladder width in mm
- Strut bend curve according to support width