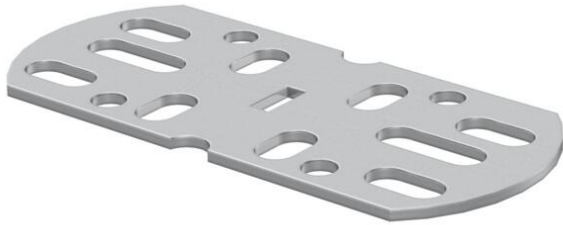


Technical data sheet

Straight and angle connector A2



Item number: 6066569



Straight and angle connector for connection of AZ channels.
An adjustable connector can be created using two straight and angle connectors.
Scope of delivery includes bolts and nuts.

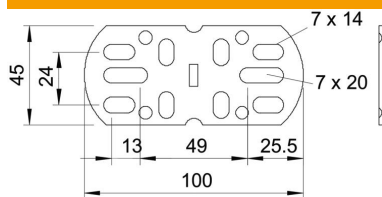


A2	Stainless steel
2B	Bright, treated

Master data

Item number	6066569
Description 1	Straight and angle connector
Description 2	for AZ duct
Manufacturer	OBO
Dimension	45x100
Colour	stainless steel
Material	Stainless steel
Surface	Bright, treated
Surface standard	
Smallest sales unit	10
Unit of quantity	Piece
Weight	7.746 kg
Weight unit	kg/100 pc.

Dimensions



Dimension	100 x 45
Width	100 mm
Height	45 mm
Plate thickness	1.5 mm

Technical data sheet

Straight and angle connector A2

Item number: 6066569



Technical data

Version for	Straight and angle connector
Suitable for mesh cable tray	no
Suitable for cable ladder	no
Suitable for cable tray	yes
Suitable for cable tray system height	50 mm
Adjustable connector, horizontal	no
Articulated connector, vertical	no
Rustproof steel, pickled	no
Connection type	Screw connector