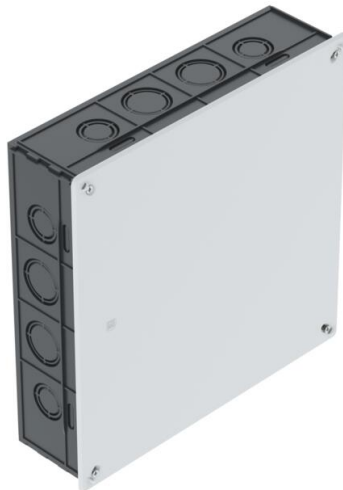


# Technical data sheet

## Flush-mounted connection box 250

Item number: 2003136



Flush-mounted connection box for clamping terminals, for use in masonry with an installation depth of at least 65 mm. With cover and cover screws (15 mm). Flat cover edge, roughened surface.

- 8 side combination pipe entries of Ø 34.6 and 28.5 mm
- 8 side combination pipe entries of Ø 28.5 and 21.5 mm
- 8 side entries of Ø 28.5 mm
- 8 side entries of Ø 21.5 mm
- 8 side entries for flat cables/ribbon cables



**PS** Polystyrene

### Master data

Item number	2003136
Type	UV 250 K
Description 1	Connection box
Description 2	flush-mounted
Manufacturer	OBO
Dimension	250x250x65
Colour	Black
Material	Polystyrene
Smallest sales unit	10
Unit of quantity	Piece
Weight	52 kg
Weight unit	kg/100 pc.
CO Footprint (GWP) Cradle-to-Gate	1,6208 kg COe / 1 Piece

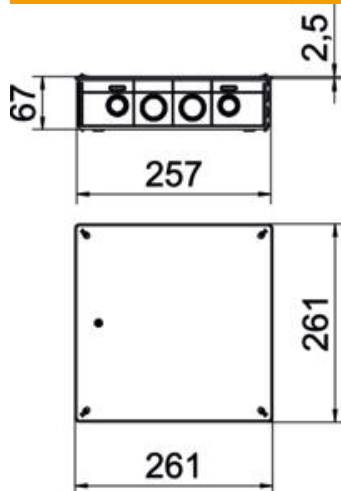
# Technical data sheet

## Flush-mounted connection box 250

Item number: 2003136



### Dimensions



Length	250 mm
Width	250 mm
Height	65 mm
Dimension A	328 mm
Dimension B	260 mm
Dimension H	65 mm

### Technical data

No. of entries	40
Type of insertion	NYM cables, data cables and corrugated pipes
Type of housing penetration	Pre-marking
Version for	Single
Type	Connection socket/box
Equipment	Without
Cover	Not transparent
Cover fastening	Screwed
Entry from rear	no
Entries	40
Flame-resistant	acc. to VDE 0471/DIN 695 Part 2-1, test temperature 650°C
Shape	Square
Maintain electrical functions	Without
Floor height, min.	67 mm
Halogen-free	no
With screening	no
With nail strap	no
With bolts	no
Mounting type	Concealed
Nominal cross-section, min.	16 mm <sup>2</sup>
Sealable	no
Impact-resistant	yes
Protection rating	IP20
Support	Without
Airtight	no
Rated voltage	400 V