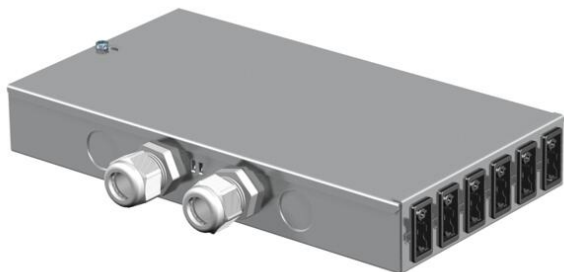


# Technical data sheet

## UVS energy distributor with fixed connection, normal and special circuit

Item number: 6108010



Energy distributor for heavy current technology with fixed connection, equipped and pre-wired.

Input: Two 3-phase circuits via a screwless terminal block, 5-pin, for cable cross-sections of 0.5–4 mm<sup>2</sup>.

Output: Twelve self-locking connectors, 3-pin, in white (6x) and black (6x), 16 A, type GST18i (socket part: 2 x L1, 2 x L2, 2 x L3 for each rotary current circuit).  
Internal wiring: PVC non-sheathed cable H07V-U2.5.



St Steel

### Master data

Item number	6108010
Type	UVS-6S6W2
Description 1	Underfloor distributor
Manufacturer	OBO
Material	Steel
Smallest sales unit	1
Unit of quantity	Piece
Weight	146.1 kg
Weight unit	kg/100 pc.
CO2 Footprint (GWP) Cradle-to-Gate	4,134 kg CO2e / 1 Piece

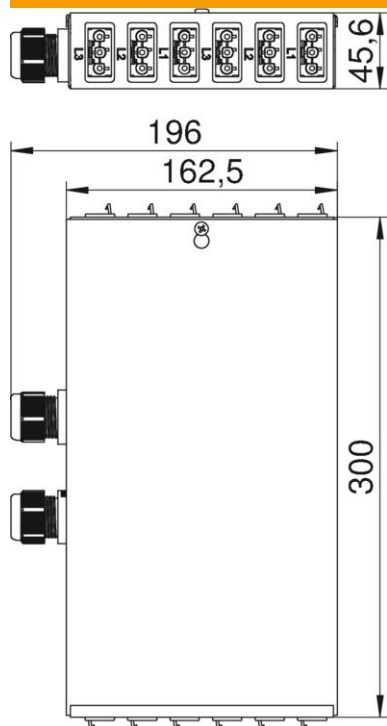
# Technical data sheet

UVS energy distributor with fixed connection, normal and special circuit

Item number: 6108010



## Dimensions



## Technical data

Connection type	Terminal block
No. of outlets	12
Number of input circuits	2
Input	5-pole
Colour of the plug connector system	Black/white
Suitable for through wiring	no
Cross-section of the connection cable	4 mm <sup>2</sup>
Plug connector system, system-specific	yes