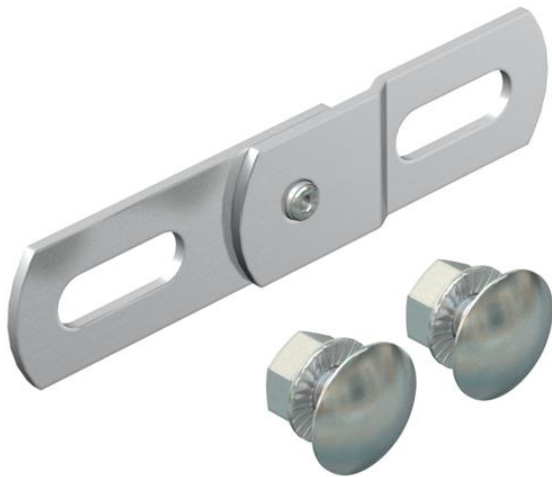


Technical data sheet

Adjustable connector A2

Item number: 6066933



Hinge connector for vertical connections of BKK systems.
Including appropriate fastening material.

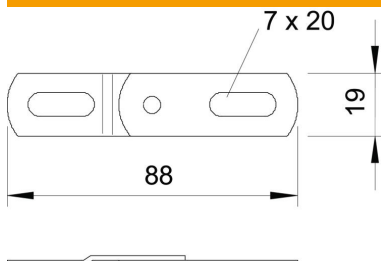


A2	Stainless steel
2B	Bright, treated

Master data

Item number	6066933
Description 1	Hinge connector
Description 2	for BKK system
Manufacturer	OBO
Dimension	19x88
Colour	stainless steel
Material	Stainless steel
Surface	Bright, treated
Surface standard	
Smallest sales unit	50
Unit of quantity	Piece
Weight	4.8 kg
Weight unit	kg/100 pc.

Dimensions



Dimension	88 x 19
Plate thickness	2 mm

Technical data sheet

Adjustable connector A2

Item number: 6066933



Technical data

Suitable for mesh cable tray	no
Suitable for cable ladder	no
Suitable for cable tray	no
Adjustable connector, horizontal	no
Articulated connector, vertical	yes
Rustproof steel, pickled	no
Connection type	Screw connector