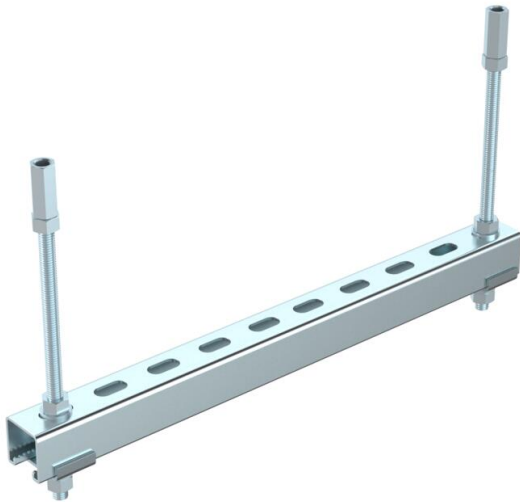


Technical data sheet

Support construction for insulations, with pendulum suspension

Item number: 7202446



Suspension and fastening material, made of steel, to create the first support of pass-through installations in fire insulation. Mounting of the pendulum with threaded rods under the ceiling. A maximum of two layers can be mounted with connection sleeves from two sets. The support constructions must be arranged on both sides of the wall at the prescribed distance to the insulation system. Including 2x MMS-plus I 7.5 x 40

St	Steel
VZ	galvanised

Master data

Item number	7202446
Description 1	Supporting structure pendulum
Description 2	set for insulation
Manufacturer	OBO
Dimension	500mm
Colour	zinc
Material	Steel
Surface	galvanised
Surface standard	
Smallest sales unit	1
Unit of quantity	Piece
Weight	235.24 kg
Weight unit	kg/100 pc.

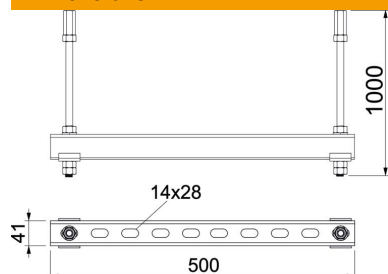
Technical data sheet

Support construction for insulations, with pendulum suspension

Item number: 7202446



Dimensions



Dimension L 1,000 mm

Technical data

Type of accessory Miscellaneous