

Technical data sheet

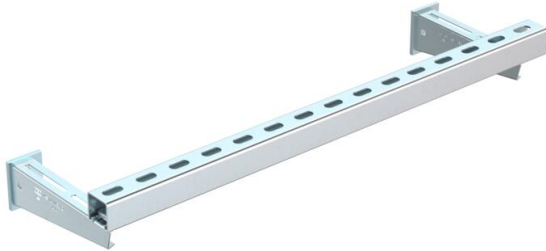
Support construction for insulations, with bracket

Item number: 7202436



Suspension and fastening material, made of steel, to create the first support of pass-through installations in fire insulation. Mounting of the bracket on the wall, support of the installation using mounting rail.

The maximum distance of the mounting rail to the wall of 200 mm fulfils the requirements of most insulation systems.
Including 2x MMS-plus 10 x 80



St	Steel
VZ	galvanised

Master data

Item number	7202436
Description 1	Supporting structure bracket
Description 2	set for insulation
Manufacturer	OBO
Dimension	500mm
Colour	zinc
Material	Steel
Surface	galvanised
Surface standard	
Smallest sales unit	1
Unit of quantity	Piece
Weight	190.74 kg
Weight unit	kg/100 pc.

Technical data sheet

Support construction for insulations, with bracket

Item number: 7202436



Dimensions

The drawing shows a side view of the support construction. It consists of a horizontal bracket with a vertical support. The bracket has a width of 217 mm and a height of 70 mm. The vertical support has a width of 50 mm and a height of 500 mm. The bracket is attached to the support with a 7x86 mm bracket and a Ø13 hole. The support has a 7x86 mm bracket at the top and a 7x86 mm bracket at the bottom.

Dimension A	50 mm
Dimension B	217 mm
Dimension H	70 mm

Technical data		
	Type of accessory	Miscellaneous