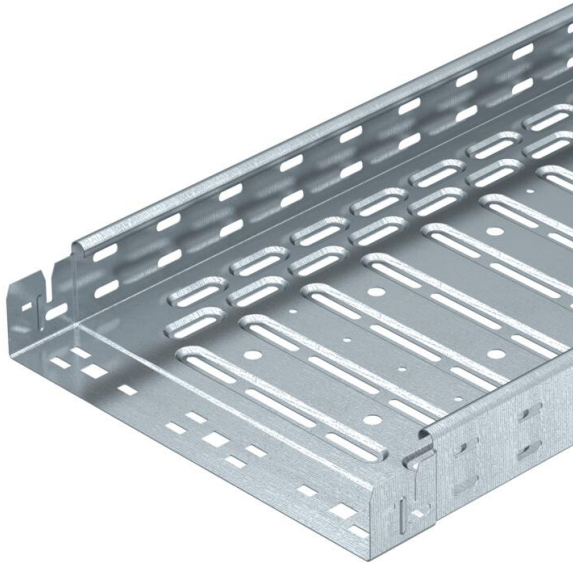


# Technical data sheet

## Cable tray RKS-Magic® 60 FS

Item number: 6047719



Cable tray with integrated quick fastening system. The usable length of the cable tray is 3,000 mm.

The cable tray has continuous side perforations of 7 x 20 mm for the installation of additional connection and mounting components.

The perforation for direct threaded rod suspension has a diameter of 11 mm. Continuous equipotential bonding is guaranteed without additional components. Magnetic shield insulation without cover 20 dB, with cover 50 dB.



|           |                  |
|-----------|------------------|
| <b>St</b> | Steel            |
| <b>FS</b> | Strip galvanized |

### Master data

|                                   |                         |
|-----------------------------------|-------------------------|
| Item number                       | 6047719                 |
| Description 1                     | Cable tray RKSM         |
| Description 2                     | Magic, quick connector  |
| Manufacturer                      | OBO                     |
| Dimension                         | 60x500x3050             |
| Colour                            | zinc                    |
| Material                          | Steel                   |
| Surface                           | Strip galvanized        |
| Surface standard                  | DIN EN 10346            |
| Smallest sales unit               | 3                       |
| Unit of quantity                  | Metre                   |
| Weight                            | 401.246 kg              |
| Weight unit                       | kg/100 m                |
| CO Footprint (GWP) Cradle-to-Gate | 9,9679 kg COe / 1 Meter |

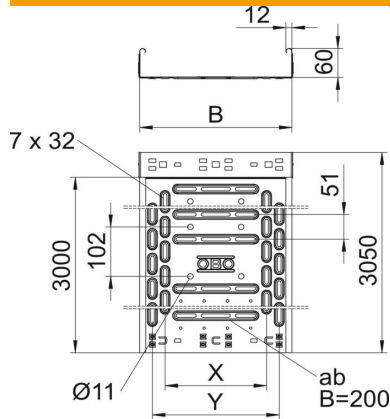
# Technical data sheet

## Cable tray RKS-Magic® 60 FS

Item number: 6047719



### Dimensions



|                 |          |
|-----------------|----------|
| Length          | 3,050 mm |
| Length          | 10 ft    |
| Width           | 500 mm   |
| Width           | 20 in    |
| Height          | 60 mm    |
| Height          | 2 in     |
| Plate thickness | 0.04 in  |
| Plate thickness | 0.9 mm   |
| Dimension B     | 500 mm   |
| Dimension t     | 300 mm   |
| Dimension x     | 400 mm   |
| Dimension y     | 450 mm   |

### Technical data

|  |                       |
|--|-----------------------|
| Connector version                        | Integrated connector  |
| Mounting system fastening type           | Floor Ceiling Wall    |
| Walkable                                 | no                    |
| Base perforation                         | 1                     |
| Maintain electrical functions            | no                    |
| With cover                               | no                    |
| Mounting perforation in base             | yes                   |
| NATO hole pattern                        | no                    |
| Usable cross-section                     | 298 cm <sup>2</sup>   |
| Usable cross-section                     | 29800 mm <sup>2</sup> |
| Rustproof steel, pickled                 | no                    |
| Side perforation                         | yes                   |
| Wide-span version                        | no                    |
| Magnetic shield insulation with cover    | 50 dB                 |
| Magnetic shield insulation without cover | 20 dB                 |
| Load test type according to IEC 61537    | Type II               |
| Usable length                            | 3000 mm               |
| Type of connector, cable support system  | Click fastening       |

# Technical data sheet

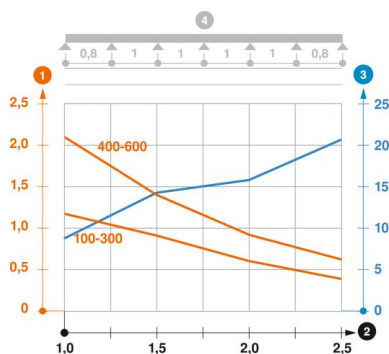
## Cable tray RKS-Magic® 60 FS

Item number: 6047719



### Loads

|                                   |           |
|-----------------------------------|-----------|
| Insertable support spacings, min. | 1 m       |
| Insertable support spacings, max. | 2.5 m     |
| NEMA load class                   | 8AA       |
| Support spacing 1.0 m             | 2.1 kN/m  |
| Support spacing 1.5 m             | 1.35 kN/m |
| Support spacing 2.0 m             | 0.8 kN/m  |
| Support spacing 2.5 m             | 0.6 kN/m  |



### Load diagram, cable tray, type RKSM 60

- 1 Permitted cable tray/ladder load in kN/m without man load
- 2 Support width in m
- 3 Rail bend in mm at permitted kN/m
- 4 Load scheme during testing
- Load curve with cable tray/ladder width in mm
- Strut bend curve according to support width