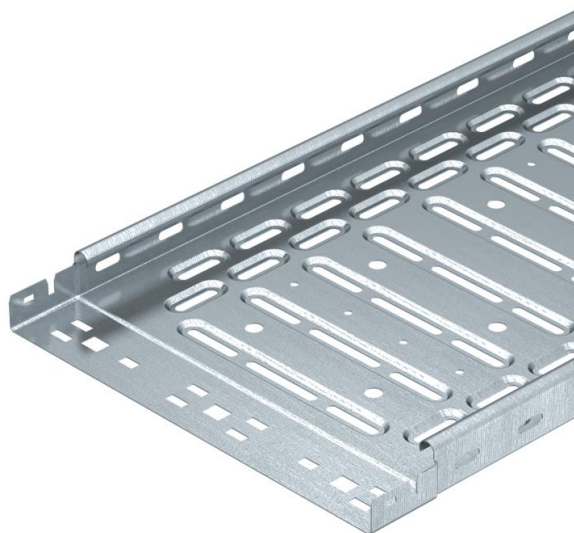


Technical data sheet

Cable tray RKS-Magic® 35 FS

Item number: 6047460



Cable tray with integrated quick fastening system. The usable length of the cable tray is 3,000 mm.

The cable tray has continuous side perforations of 7 x 20 mm for the installation of additional connection and mounting components.

The perforation for direct threaded rod suspension has a diameter of 11 mm. Continuous equipotential bonding is guaranteed without additional components. Magnetic shield insulation without cover 20 dB, with cover 50 dB.



| | |
|-----------|------------------|
| St | Steel |
| FS | Strip galvanized |

Master data

| | |
|-----------------------------------|-------------------------|
| Item number | 6047460 |
| Description 1 | Cable tray RKSM |
| Description 2 | Magic, quick connector |
| Manufacturer | OBO |
| Dimension | 35x300x3050 |
| Colour | zinc |
| Material | Steel |
| Surface | Strip galvanized |
| Surface standard | DIN EN 10346 |
| Smallest sales unit | 3 |
| Unit of quantity | Metre |
| Weight | 209.84 kg |
| Weight unit | kg/100 m |
| CO Footprint (GWP) Cradle-to-Gate | 5,1769 kg COe / 1 Meter |

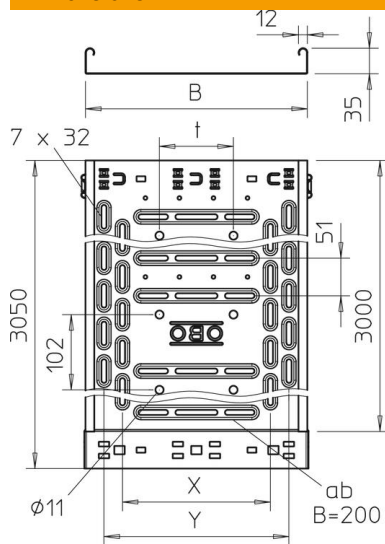
Technical data sheet

Cable tray RKS-Magic® 35 FS

Item number: 6047460



Dimensions



| | |
|-----------------|----------|
| Length | 3,050 mm |
| Length | 10 ft |
| Width | 300 mm |
| Width | 8 in |
| Height | 35 mm |
| Height | 1 in |
| Plate thickness | 0.03 in |
| Plate thickness | 0.75 mm |
| Dimension B | 300 mm |
| Dimension t | 100 mm |
| Dimension x | 200 mm |
| Dimension y | 250 mm |

Technical data

| | |
|--|-----------------------|
| Connector version | Integrated connector |
| Mounting system fastening type | Floor Ceiling Wall |
| Walkable | no |
| Base perforation | 1 |
| Maintain electrical functions | no |
| With cover | no |
| Mounting perforation in base | yes |
| NATO hole pattern | no |
| Usable cross-section | 103 cm ² |
| Usable cross-section | 10300 mm ² |
| Rustproof steel, pickled | no |
| Side perforation | yes |
| Wide-span version | no |
| Magnetic shield insulation with cover | 50 dB |
| Magnetic shield insulation without cover | 20 dB |
| Load test type according to IEC 61537 | Type II |
| Usable length | 3000 mm |
| Type of connector, cable support system | Click fastening |

Technical data sheet

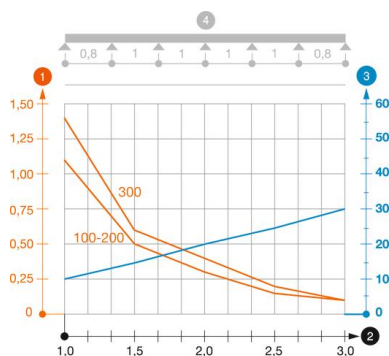
Cable tray RKS-Magic® 35 FS

Item number: 6047460



Loads

| | |
|-----------------------------------|----------|
| Insertable support spacings, min. | 1 m |
| Insertable support spacings, max. | 3 m |
| Support spacing 1.0 m | 1.4 kN/m |
| Support spacing 1.5 m | 0.6 kN/m |
| Support spacing 2.0 m | 0.4 kN/m |
| Support spacing 2.5 m | 0.2 kN/m |
| Support spacing 3.0 m | 0.1 kN/m |



Load diagram, cable tray, type RKSM 35

- 1 Permitted cable tray/ladder load in kN/m without man load
- 2 Support width in m
- 3 Rail bend in mm at permitted kN/m
- 4 Load scheme during testing
- Load curve with cable tray/ladder width in mm
- Strut bend curve according to support width