

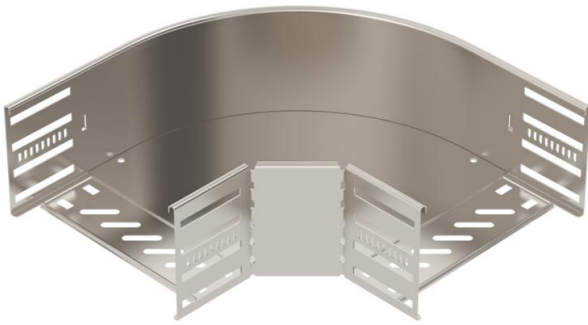
# Technical data sheet

90° bend 110 A2

Item number: 6036862



90° bend for the creation of a horizontal branch, fitting for lock and screw-on cable trays of side height 110 mm. Screwless mounting with double clamps or screw connection with FRS truss-head screws and M6 combination nuts. Can be used indoors and outdoors. Fastening material must be ordered separately.



**A2** Stainless steel

**2B** Bright, treated

## Master data

|                                    |                            |
|------------------------------------|----------------------------|
| Item number                        | 6036862                    |
| Type                               | RB 90 120 A2               |
| Description 1                      | 90° bend                   |
| Description 2                      | for cable tray, horizontal |
| Manufacturer                       | OBO                        |
| Dimension                          | 110x200                    |
| Colour                             | stainless steel            |
| Material                           | Stainless steel            |
| Surface                            | Bright, treated            |
| Surface standard                   |                            |
| Smallest sales unit                | 1                          |
| Unit of quantity                   | Piece                      |
| Weight                             | 131.6 kg                   |
| Weight unit                        | kg/100 pc.                 |
| CO2 Footprint (GWP) Cradle-to-Gate | 10,9915 kg CO2e / 1 Piece  |

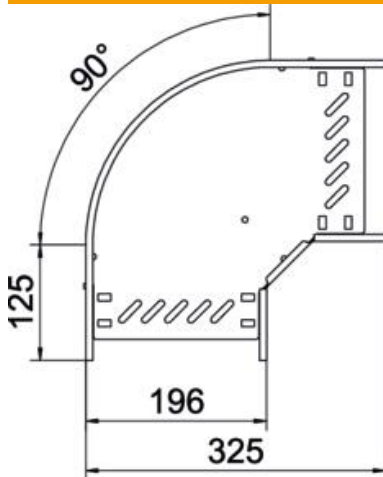
# Technical data sheet

90° bend 110 A2

Item number: 6036862



## Dimensions



|                 |        |
|-----------------|--------|
| Width           | 200 mm |
| Height          | 110 mm |
| Plate thickness | 0.8 mm |
| Dimension B     | 200 mm |
| Dimension R     | 50 mm  |

## Technical data

|   |                      |
|---|----------------------|
| Bend (angle)                            | 90°                  |
| Connector version                       | Integrated connector |
| Type                                    | Bend, rigid          |
| Maintain electrical functions           | no                   |
| Material thickness, floor plate         | 0.8 mm               |
| With cover                              | no                   |
| Mounting perforation in base            | yes                  |
| NATO hole pattern                       | no                   |
| Change of direction                     | Horizontal           |
| Rustproof steel, pickled                | yes                  |
| Side perforation                        | yes                  |
| Permitted temperature range, max.       | 120 °C               |
| Permitted temperature range, min.       | -20 °C               |
| Wide-span version                       | no                   |
| Type of connector, cable support system | screwed/clamped      |
| Recommended quantity of bolts           | 20 St.               |
| Rail thickness                          | 1.25 mm              |