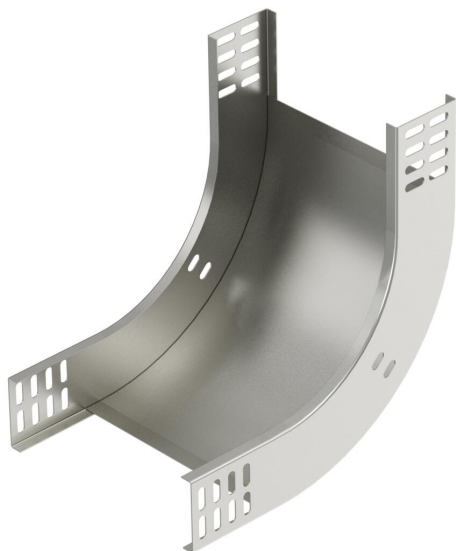


# Technical data sheet

## 90° vertical bend, rising 60 A2

Item number: 7007117



90° rising vertical bend, for all cable tray types of 60 mm side height.  
The vertical bend is pushed over the end of the cable tray and screwed tight.  
Fastening materials should be ordered separately.



|           |                 |
|-----------|-----------------|
| <b>A2</b> | Stainless steel |
| <b>2B</b> | Bright, treated |

### Master data

|                     |                   |
|---------------------|-------------------|
| Item number         | 7007117           |
| Description 1       | 90° vertical bend |
| Description 2       | rising            |
| Manufacturer        | OBO               |
| Dimension           | 60x400            |
| Colour              | stainless steel   |
| Material            | Stainless steel   |
| Surface             | Bright, treated   |
| Surface standard    |                   |
| Smallest sales unit | 1                 |
| Unit of quantity    | Piece             |
| Weight              | 181 kg            |
| Weight unit         | kg/100 pc.        |

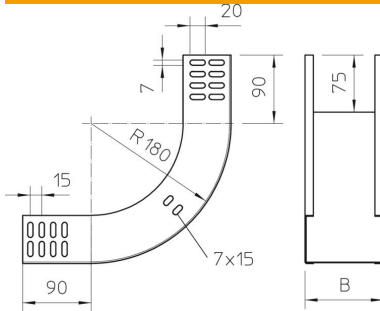
# Technical data sheet

## 90° vertical bend, rising 60 A2

Item number: 7007117



### Dimensions



|                 |        |
|-----------------|--------|
| Width           | 400 mm |
| Width           | 16 in  |
| Height          | 60 mm  |
| Height          | 2 in   |
| Plate thickness | 1 mm   |
| Dimension B     | 400 mm |

### Technical data

|   |                    |
|---|--------------------|
| Bend (angle)                            | 90°                |
| Connector version                       | Without connectors |
| Maintain electrical functions           | no                 |
| Mounting perforation in base            | no                 |
| NATO hole pattern                       | no                 |
| Change of direction                     | Vertical rising    |
| Rustproof steel, pickled                | no                 |
| Side perforation                        | no                 |
| Wide-span version                       | no                 |
| Type of connector, cable support system | Screwed            |