

Technical data sheet

90° vertical bend, falling 60 A2

Item number: 7007157



90° vertical bend, falling, for all cable tray types of 60 mm side height.
The vertical bend is pushed over the end of the cable tray and screwed tight.
Fastening materials should be ordered separately.



A2 Stainless steel

2B Bright, treated

Master data

| | |
|---------------------|-------------------|
| Item number | 7007157 |
| Description 1 | 90° vertical bend |
| Description 2 | falling |
| Manufacturer | OBO |
| Dimension | 60x200 |
| Colour | stainless steel |
| Material | Stainless steel |
| Surface | Bright, treated |
| Surface standard | |
| Smallest sales unit | 1 |
| Unit of quantity | Piece |
| Weight | 84 kg |
| Weight unit | kg/100 pc. |

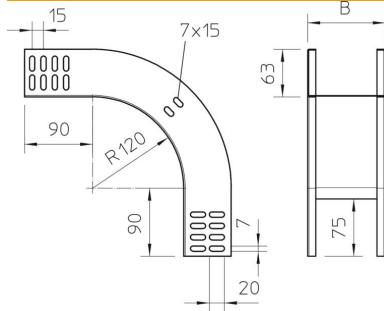
Technical data sheet

90° vertical bend, falling 60 A2

Item number: 7007157



Dimensions



| | |
|-----------------|--------|
| Width | 200 mm |
| Width | 8 in |
| Height | 60 mm |
| Height | 2 in |
| Plate thickness | 1 mm |
| Dimension B | 200 mm |

Technical data

| | |
|---|--------------------|
| Bend (angle) | 90° |
| Connector version | Without connectors |
| Maintain electrical functions | no |
| Mounting perforation in base | no |
| NATO hole pattern | no |
| Change of direction | Vertical, falling |
| Rustproof steel, pickled | no |
| Side perforation | no |
| Wide-span version | no |
| Type of connector, cable support system | Screwed |