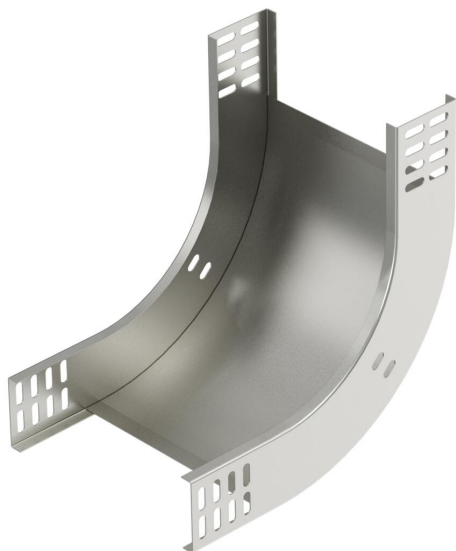


Technical data sheet

90° vertical bend, rising 60 A4

Item number: 7006720



90° rising vertical bend, for all cable tray types of 60 mm side height.
The vertical bend is pushed over the end of the cable tray and screwed tight.
Fastening materials should be ordered separately.



A4	Stainless steel
2B	Bright, treated

Master data

Item number	7006720
Type	RBV 610 S A4
Description 1	90° vertical bend
Description 2	rising
Manufacturer	OBO
Dimension	60x100
Colour	stainless steel
Material	Stainless steel
Surface	Bright, treated
Surface standard	
Smallest sales unit	1
Unit of quantity	Piece
Weight	73 kg
Weight unit	kg/100 pc.
CO2 Footprint (GWP) Cradle-to-Gate	5,222 kg CO2e / 1 Piece

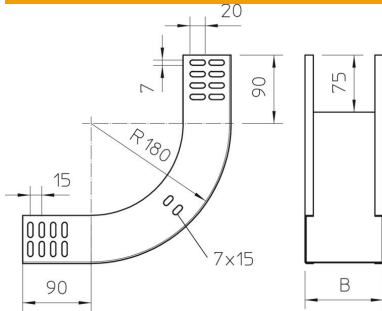
Technical data sheet

90° vertical bend, rising 60 A4

Item number: 7006720



Dimensions



Width	100 mm
Width	4 in
Height	60 mm
Height	2 in
Plate thickness	1 mm
Dimension B	100 mm

Technical data

Bend (angle)	90°
Connector version	Without connectors
Maintain electrical functions	no
Mounting perforation in base	no
NATO hole pattern	no
Change of direction	Vertical rising
Rustproof steel, pickled	no
Side perforation	no
Wide-span version	no
Type of connector, cable support system	Screwed