

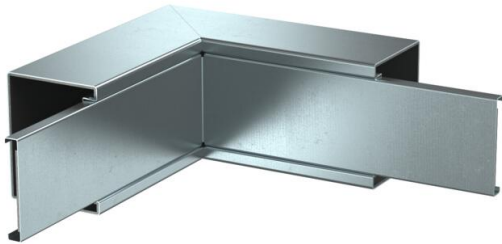
# Technical data sheet

Internal corner, duct height 80 mm, FS

Item number: 7218054



Internal corner with intumescent fire protection mesh for PYROLINE® Rapid PLM installation duct. Suitable for direct wall and ceiling mounting, mounting below system floors and on support systems. Tool-free joint mounting with PLM SI joint connector. The cover is snapped on without tools, allowing rapid inspection and retroassignment. The cover overhang allows offset cover mounting for continuous equipotential bonding of the entire duct section.



|    |                  |
|----|------------------|
| St | Steel            |
| FS | Strip galvanized |

## Master data

|                     |                           |
|---------------------|---------------------------|
| Item number         | 7218054                   |
| Type                | PLM IC 0810 FS            |
| Description 1       | Internal corner           |
| Description 2       | with fire protection mesh |
| Manufacturer        | OBO                       |
| Dimension           | 330x100x330               |
| Colour              | zinc                      |
| Material            | Steel                     |
| Surface             | Strip galvanized          |
| Surface standard    | DIN EN 10346              |
| Smallest sales unit | 1                         |
| Unit of quantity    | Piece                     |
| Weight              | 156 kg                    |
| Weight unit         | kg/100 pc.                |

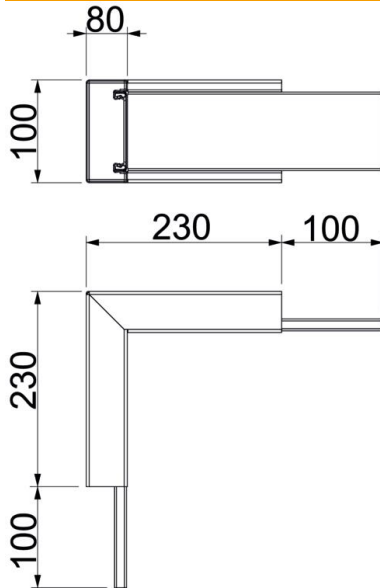
# Technical data sheet

Internal corner, duct height 80 mm, FS

Item number: 7218054



## Dimensions



|             |        |
|-------------|--------|
| Dimension A | 230 mm |
| Dimension B | 100 mm |
| Dimension H | 80 mm  |

## Technical data

|                           |                      |
|---------------------------|----------------------|
| Number of flammable sides | 4                    |
| Cover fastening           | Miscellaneous        |
| With perforation          | yes                  |
| Usable cross-section      | 5180 mm <sup>2</sup> |
| Partitions possible       | no                   |
| Jacketing                 | Steel                |
| Angle of the bend         | 90 °                 |