

# Technical data sheet

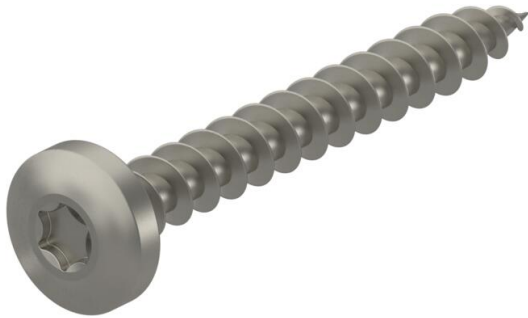
## Chipboard screw, with Torx, panhead, stainless steel

Item number: 3191032



Stainless steel wood screw with lens head and Torx drive for fastenings in interior and exterior areas.

Areas of use: Wood, chipboard, plasterboard panels and plastic anchors.



**A4** Stainless steel

**2B** Bright, treated

### Master data

Item number	3191032
Type	OTSP 6,0x40 A4
Description 1	Chipboard screw
Description 2	panhead, TX 25 drive
Manufacturer	OBO
Dimension	6x40mm
Material	Stainless steel
Surface	Bright, treated
Surface standard	
Smallest sales unit	100
Unit of quantity	Piece
Weight	0.72 kg
Weight unit	kg/100 pc.

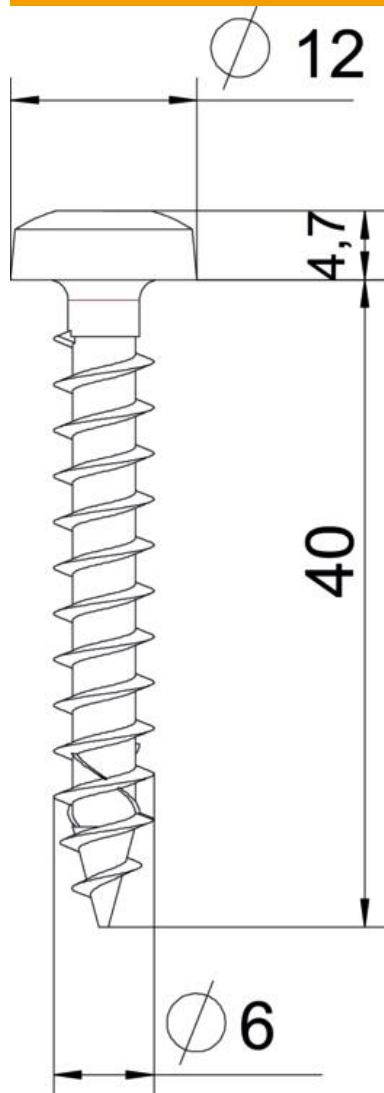
# Technical data sheet

Chipboard screw, with Torx, panhead, stainless steel

Item number: 3191032



## Dimensions



Length	40 mm
Dimension D	6 mm
Dimension L	40 mm

## Technical data

Drive size	TX 25
Hardened	no
Head diameter	12 mm
Head shape	Panhead
Screw system	Torx
Two-compartment	no