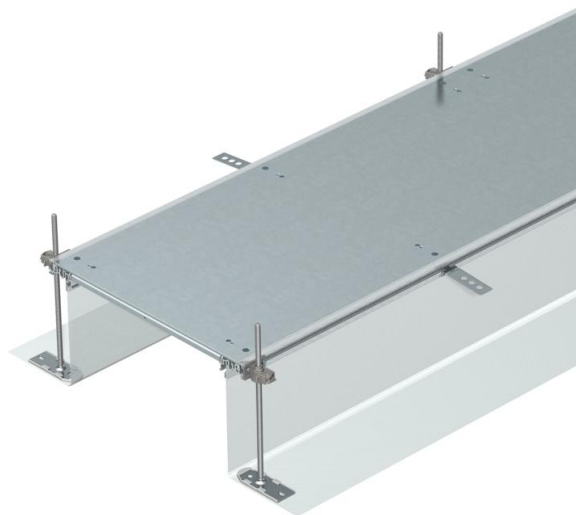


Technical data sheet

Trunking unit, blank, locking, height 40–240 mm

Item number: 7424060



Ready-to-mount trunking unit for cable routing consisting of 3 self-locking blind lids, 2 side profiles with attached flexible side wall made of metal mesh, floor covering contact profiles with a height H of 3 mm. The scope of delivery contains 6 height-adjustable fixing brackets, 6 screed anchors and 3 lid butt seals (for nominal trunking widths 200, 300 and 400) or 6 lid butt supports (for nominal trunking widths 500 and 600). The essential levelling units (observe height adjustment) for the 500 and 600 lid supports are not contained in the scope of delivery and should be ordered separately. The trunking lids are screwed up to and including the nominal width 400, pre-mounted with locking springs.



St

Steel

FS

Strip galvanized

Master data

| | |
|--|--|
| Item number | 7424060 |
| Type | OKA-G20040240R |
| Description 1 | Flushfloor trunking unit |
| Description 2 | blank, locking |
| Manufacturer | OBO |
| Dimension | 2400x200x240 |
| Material | Steel |
| Surface | Strip galvanized |
| Surface standard | DIN EN 10346 |
| Smallest sales unit | 2.4 |
| Unit of quantity | Metre |
| Weight | 855.8 kg |
| Weight unit | kg/100 m |
| CO ₂ Footprint (GWP) Cradle-to-Gate | 47,4413 kg CO ₂ e / 1 Meter |

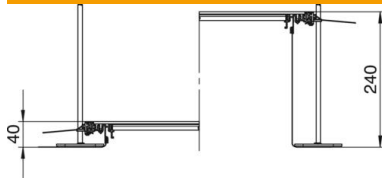
Technical data sheet

Trunking unit, blank, locking, height 40–240 mm

Item number: 7424060



Dimensions



| | |
|--------|----------|
| Length | 2,400 mm |
| Width | 200 mm |

Technical data

| | |
|--|---------|
| Mounting opening cover | no |
| Covers | 3 |
| Mounting system fastening type | Floor |
| Floor plate | no |
| Floor care | Wet |
| Cover fastening, locking | yes |
| Seal installation option | yes |
| Installation opening for on-floor tank | no |
| Decouplable | yes |
| Suitable for expansion joint | no |
| Mesh wall | yes |
| Trunking height, max. | 240 mm |
| Duct height, min. | 40 mm |
| Cover material thickness | 4 |
| Minimum screed height | 40 |
| With connection opening | no |
| With equipotential bonding | no |
| With separating retainer | no |
| With overhang | yes |
| Mounting opening | Without |
| Height-adjustment range, max. | 240 mm |
| Height-adjustment range, min. | 40 mm |
| Removable cover | yes |