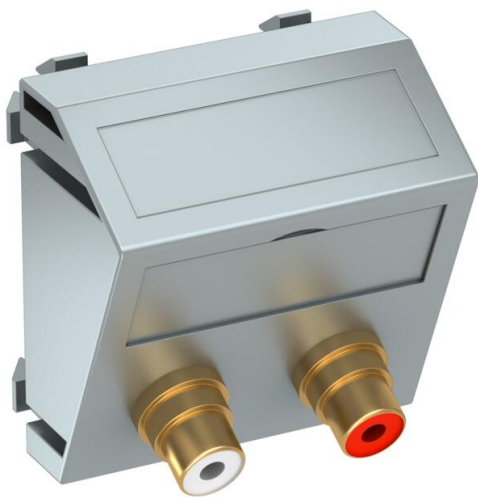


Technical data sheet

Audio cinch connection, 1 module, slanting outlet, as soldered connection, aluminium-painted
Item number: 6105060



Multimedia support with two cinch connection sockets for audio R/L, slanting cable outlet, with labelling panel, two cinch sockets (RCA) with soldered connection, colour coding red/white. Support plate with locking fastening, suitable for horizontal and vertical installation in the system environment.

PC Polycarbonate

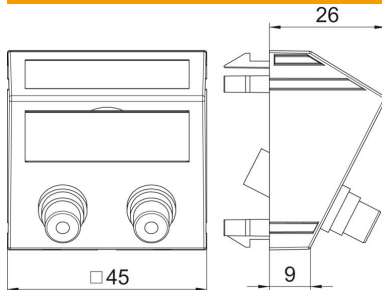
Master data		
Item number	6105060	
Type	MTS-2R L AL1	
Description 1	Multimedia support audio cinch	
Description 2	2xsocket with sold. connection	
Manufacturer	OBO	
Dimension	45x45mm	
Colour	Aluminium painted	
Material	Polycarbonate	
Smallest sales unit	1	
Unit of quantity	Piece	
Weight	2.7 kg	
Weight unit	kg/100 pc.	
CO2 Footprint (GWP) Cradle-to-Gate	0,0443 kg CO2e / 1 Piece	

Technical data sheet

Audio cinch connection, 1 module, slanting outlet, as soldered connection, aluminium-painted
Item number: 6105060



Dimensions



Technical data

Number of units	1
Surface version	Matt
Fastening type	Lock
Halogen-free	yes
Hinged cover	no
Lamp-wire connector	no
With printed label	no
With dust protection	no
Protection rating	IP20
Support ring	no
Transparent	no
Use	Cinch
Strain relief option	no
Combination	Basic element with central cover plate