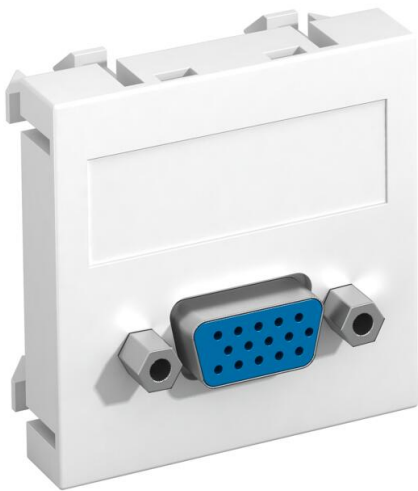


Technical data sheet

VGA connection, 1 module, straight outlet, as screw connection
Item number: 6104610



Multimedia support with one VGA connection socket, straight cable outlet, with labelling panel, VGA socket (HD15) with screw connection. Support plate with locking fastening, suitable for horizontal and vertical installation in the system environment.

PC Polycarbonate

Master data		
Item number	6104610	
Type	MTG-VGA S RW1	
Description 1	Multimedia support, VGA	
Description 2	socket with screw connection	
Manufacturer	OBO	
Dimension	45x45mm	
Colour	Pure white; RAL 9010	
Material	Polycarbonate	
Smallest sales unit	1	
Unit of quantity	Piece	
Weight	2.4 kg	
Weight unit	kg/100 pc.	
CO2 Footprint (GWP) Cradle-to-Gate	0,0961 kg CO2e / 1 Piece	

Technical data sheet

VGA connection, 1 module, straight outlet, as screw connection

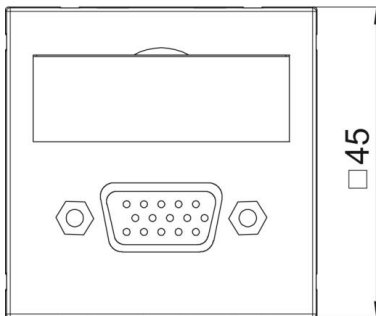
Item number: 6104610



Dimensions



Width	45 mm
Height	45 mm



Technical data

Number of units	1
Surface version	Matt
Fastening type	Lock
Labelling panel	With labelling panel
Halogen-free	yes
Hinged cover	no
Lamp-wire connector	no
With printed label	no
With dust protection	no
Protection rating	IP20
Depth	9 mm
Support ring	no
Transparent	no
Use	VGA
Strain relief option	no
Combination	Basic element with central cover plate