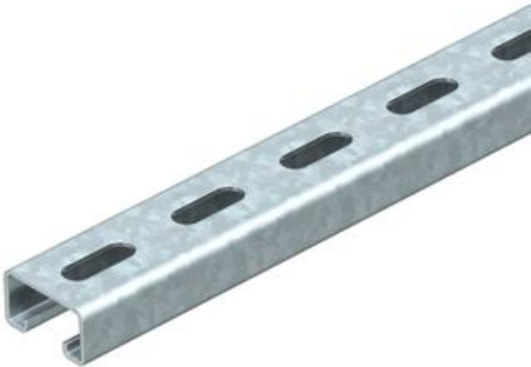


# Technical data sheet

MS4121 mounting rail, slot 22 mm, FT, perforated

Item number: 1122934



Heavy-duty C profile rail for individual installation of support constructions, e.g. for cable trays or as a panel for switchgear cabinets. Can also be used for cable routing, in conjunction with clamp clips with a U foot.



St

Steel

FT

Hot-dip galvanised

## Master data

Item number	1122934
Type	MS4121P0300FT
Description 1	Profile rail
Description 2	perforated, slot 22mm
Manufacturer	OBO
Dimension	300x41x21
Material	Steel
Surface	Hot-dip galvanised
Surface standard	DIN EN ISO 1461
Smallest sales unit	1
Unit of quantity	Piece
Weight	53 kg
Weight unit	kg/100 pc.
CO Footprint (GWP) Cradle-to-Gate	0,9545 kg COe / 1 Piece

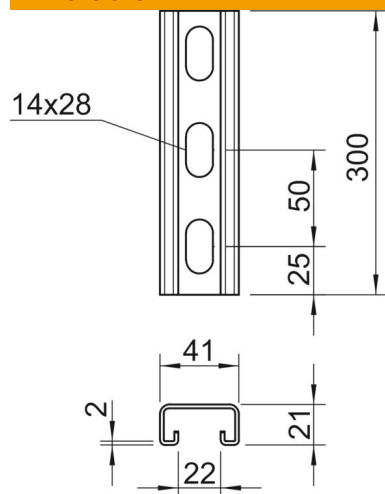
# Technical data sheet

MS4121 mounting rail, slot 22 mm, FT, perforated

Item number: 1122934



## Dimensions



Length	300 mm
Width	41 mm
Height	21 mm
Dimension L	300 mm

## Technical data

Breakable	no
Type of perforation	Perforated back
Version for	Single profile
Drill hole spacing, centre	50 mm
Maintain electrical functions	yes
Hole size	14x28 mm
Material thickness	2 mm
With perforation	yes
With toothing	yes
Profile shape	C profile
Slot width	22 mm
Static value A	1.65 cm <sup>2</sup>
Static value Iy	0.95 cm
Static value Iz	4.51 cm
Static value Wy	0.89 cm <sup>2</sup>
Static value Wz	2.2 cm <sup>2</sup>