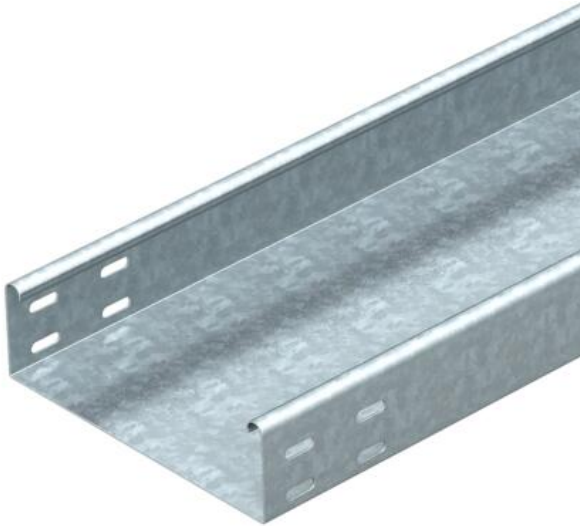


Technical data sheet

Cable tray MKSU 60 FT

Item number: 6064426



MKSU 60 = Medium duty cable tray system, unperforated, with a side height of 60 mm.
The cable tray has connector perforations on both sides.
Straight connectors should be ordered separately and in the appropriate quantity.
Magnetic shield insulation without cover 20 dB, with cover 50 dB.



| | |
|----|--------------------|
| St | Steel |
| FT | Hot-dip galvanised |

Master data

| | |
|-----------------------------------|-------------------------------|
| Item number | 6064426 |
| Description 1 | Cable tray MKSU |
| Description 2 | unperforated, connector holes |
| Manufacturer | OBO |
| Dimension | 60x400x3000 |
| Colour | zinc |
| Material | Steel |
| Surface | Hot-dip galvanised |
| Surface standard | DIN EN ISO 1461 |
| Smallest sales unit | 3 |
| Unit of quantity | Metre |
| Weight | 464 kg |
| Weight unit | kg/100 m |
| CO Footprint (GWP) Cradle-to-Gate | 10,3006 kg COe / 1 Meter |

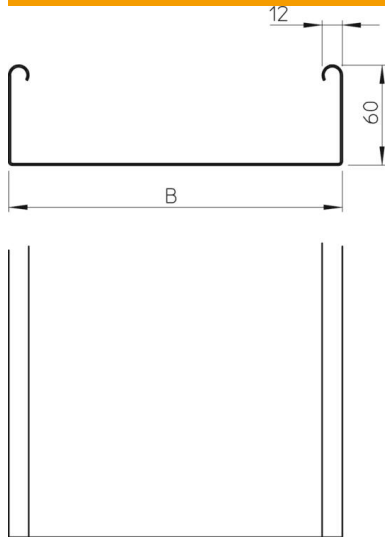
Technical data sheet

Cable tray MKSU 60 FT

Item number: 6064426



Dimensions



| | |
|-----------------|----------|
| Length | 3,000 mm |
| Length | 10 ft |
| Width | 400 mm |
| Width | 16 in |
| Height | 60 mm |
| Height | 2 in |
| Plate thickness | 0.04 in |
| Plate thickness | 1 mm |

Technical data

| | |
|---|-----------------------|
| Connector version | Without connectors |
| Mounting system fastening type | Floor Ceiling Wall |
| Walkable | no |
| Maintain electrical functions | no |
| With cover | no |
| Mounting perforation in base | no |
| NATO hole pattern | no |
| Usable cross-section | 238 cm ² |
| Usable cross-section | 23800 mm ² |
| Rustproof steel, pickled | no |
| Side perforation | no |
| Wide-span version | no |
| Load test type according to IEC 61537 | Type II |
| Type of connector, cable support system | Screwed |

Technical data sheet

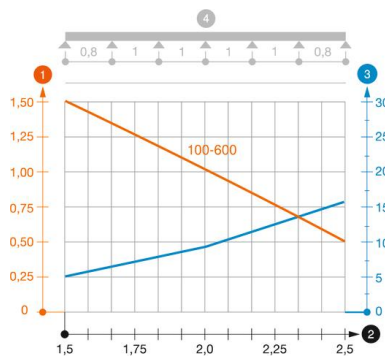
Cable tray MKSU 60 FT

Item number: 6064426



Loads

| | |
|-----------------------------------|-----------|
| Insertable support spacings, min. | 1.5 m |
| Insertable support spacings, max. | 2.5 m |
| Support spacing 1.5 m | 1.5 kN/m |
| Support spacing 1.75 m | 1.25 kN/m |
| Support spacing 2.0 m | 1 kN/m |
| Support spacing 2.5 m | 0.5 kN/m |



Load diagram, cable tray, type MKSU 60 FS FT

- 1 Permitted cable tray/ladder load in kN/m without man load
- 2 Support width in m
- 3 Rail bend in mm at permitted kN/m
- 4 Load scheme during testing
- Load curve with cable tray/ladder width in mm
- Strut bend curve according to support width