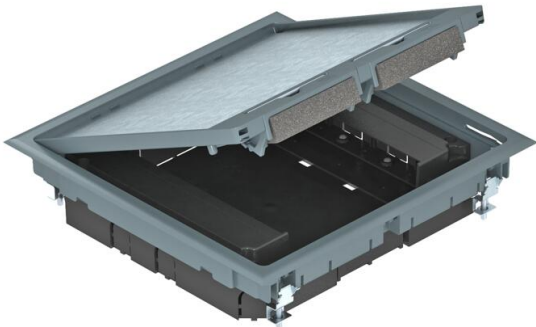


Technical data sheet

Service outlet, square, for screed height 55 mm

Item number: 7405037



GES9 service outlet with a fixed construction height of 55 mm for use in installation trunking systems in dry rooms with dry-care floors in interior areas. With two installation housings for vertical mounting of Modul 45 devices and four strain reliefs. Two installation frames are required to mount Modul 45 devices.

The data modules are mounted using a maximum of two optional MPMT45 mounting plates.

The service outlet is equipped with universal fastening brackets.



PA Polyamide

Master data		
Item number	7405037	
Description 1	Service outlet	
Description 2	for duct mounting	
Manufacturer	OBO	
Dimension	263x263x59	
Colour	Iron grey; RAL 7011	
Material	Polyamide	
Smallest sales unit	1	
Unit of quantity	Piece	
Weight	206.7 kg	
Weight unit	kg/100 pc.	

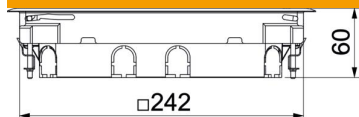
Technical data sheet

Service outlet, square, for screed height 55 mm

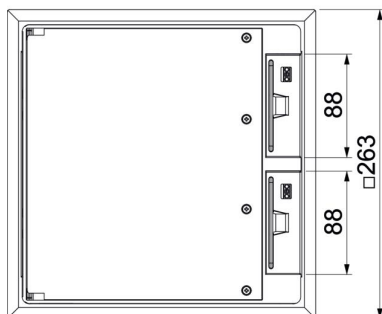
Item number: 7405037



Dimensions



Length	263 mm
Width	263 mm
Height	59 mm
Dimension h	55 mm



Technical data

Number of installable devices	8
Version for	Square
Cable outlet version	Swivellable cord outlet
Floor covering protection frame	yes
Floor care	Dry
Seal installation option	no
Screed height, min.	55 mm
Floor height, min.	58 mm
Suitable for raised floor installation	yes
Suitable for screed-flush closed underfloor ducts	yes
Suitable for screed-covered underfloor ducts	yes
Suitable for cavity floor installation	yes
Suitable for wet care	no
Suitable for underfloor ducts	yes
Device support to accept mounting boxes	no
Length of external dimensions	263 mm
Length of installation dimensions	242 mm
With floor covering recess	no
Nominal size for device installation units	9
Frame version	Carpet protection frame
Heavy-duty version	no
Vertical load, large area	to 5,000 N
Vertical load, small area	to 3,000 N
Opening mechanism	Handle
Floor covering thickness	5 mm