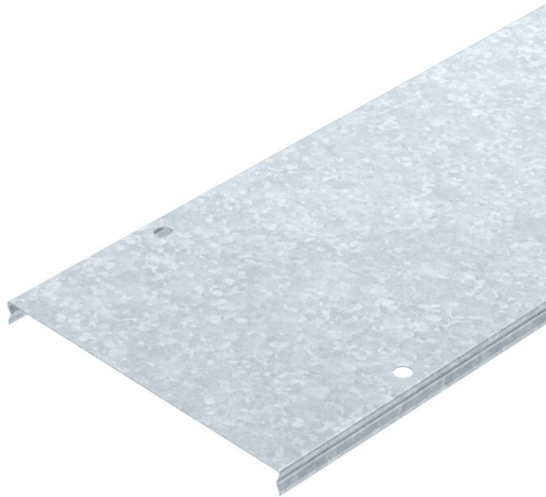


Technical data sheet

Cover for mesh cable tray, latchable FT

Item number: 6001826



Lockable cover for mesh cable trays of type GR and GRM. Protects cables from damage, contamination and moisture from above. Suitable for industrial areas such as mechanical engineering.
With transverse bead from 400 mm width.
When using covers outdoors, additional measures against the influence of wind may need to be taken.



St	Steel
FT	Hot-dip galvanised

Master data

Item number	6001826
Type	DGRR 200 FT
Description 1	Cover snapable
Description 2	for mesh cable tray
Available from	01.04.2019
Manufacturer	OBO
Dimension	200x3000
Colour	zinc
Material	Steel
Surface	Hot-dip galvanised
Surface standard	DIN EN ISO 1461
Smallest sales unit	3
Unit of quantity	Metre
Weight	149.667 kg
Weight unit	kg/100 m
CO2 Footprint (GWP) Cradle-to-Gate	4,2201 kg CO2e / 1 Meter

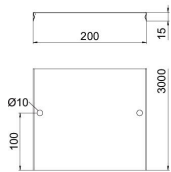
Technical data sheet

Cover for mesh cable tray, latchable FT

Item number: 6001826



Dimensions



Length	3,000 mm
Width	198 mm
Width	7.8 in
Height	15 mm
Height	0.59 in
Plate thickness	0.75 mm
Dimension B	198 mm

Technical data

Fastening type	Locking
Maintain electrical functions	no
Suitable for mesh cable tray	yes
Suitable for cable ladder	no
Suitable for cable tray	no
Rustproof steel, pickled	no