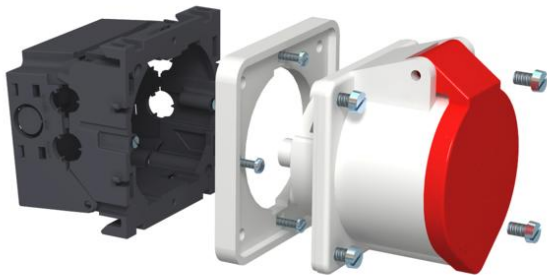


Technical data sheet

Accessory mounting box CEE, 16 A

Item number: 6288612



Accessory mounting box, complete, for the installation of a CEE connection device in device installation trunking with 80 mm cover, consisting of:

- Front locking device installation trunking
- CEE connection unit and mounting material
- CEE socket 16 A

For installation in Rapid 80 device installation trunking and ISS service poles.

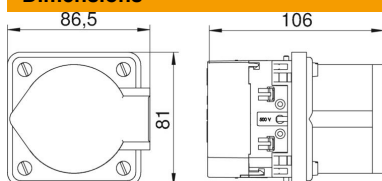


PA Polyamide

Master data

Item number	6288612
Description 1	CEE mounting box
Description 2	with CEE16
Manufacturer	OBO
Colour	Iron grey; RAL 7011
Material	Polyamide
Smallest sales unit	1
Unit of quantity	Piece
Weight	34.11 kg
Weight unit	kg/100 pc.
CO Footprint (GWP) Cradle-to-Gate	0,3803 kg COe / 1 Piece

Dimensions



Technical data

Number of units	1
Version for	Closed
Fastening track	Other
Halogen-free	no
With connection compartment	yes
Strain relief option	no