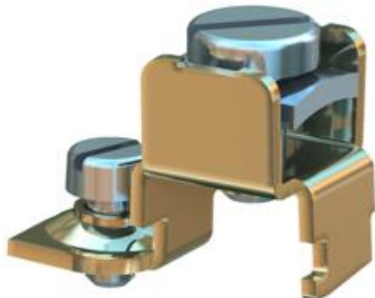


# Technical data sheet

## Protective conductor connection bracket

Item number: 6288704



Protective conductor connection bracket to include steel and aluminium device installation trunking, service poles and system components of underfloor duct systems in the protective measure.

Clamping area: 2 x 1.5–4 mm<sup>2</sup>

If there is a fault, metallic parts will carry voltage. Tighten the contact screw with at least 1.2 Nm or ensure the contact with mechanical work.



St	Steel
G	Electrogalvanized

### Master data

Item number	6288704
Description 1	Earth conductor clamp
Manufacturer	OBO
Dimension	20x12x15
Colour	zinc
Material	Steel
Surface	Electrogalvanized
Surface standard	EN ISO 19598 / EN ISO 4042
Smallest sales unit	10
Unit of quantity	Piece
Weight	0.61 kg
Weight unit	kg/100 pc.

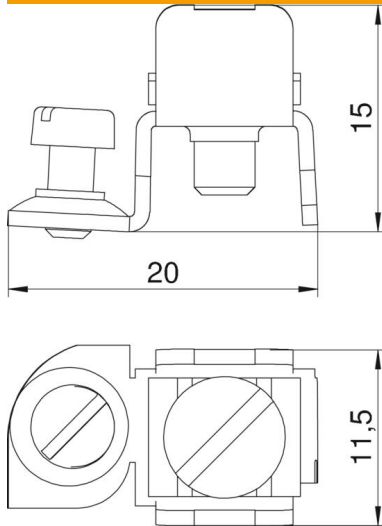
# Technical data sheet

## Protective conductor connection bracket

Item number: 6288704



### Dimensions



Length	20 mm
Width	12 mm
Height	15 mm

### Technical data

Connection cross-section	4 mm <sup>2</sup>
--------------------------	-------------------