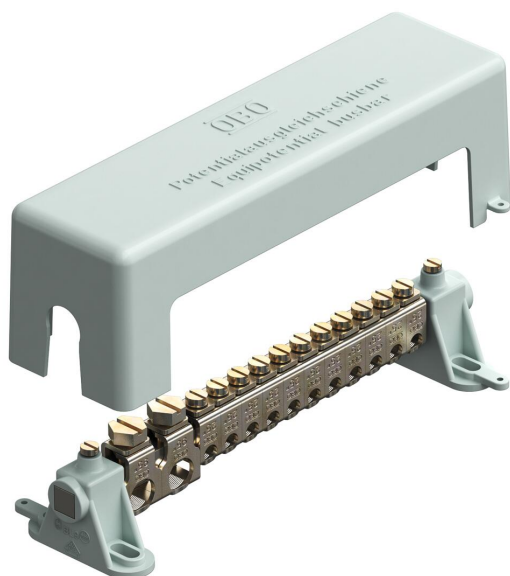


Technical data sheet

Equipotential busbar for indoors

Item number: 5015680



Equipotential busbar for equipotential bonding to DIN VDE 0100-410/-540 as well as lightning protection equipotential bonding to DIN VDE 0185-305

- According to VDE 0618, Part 1
- With 10 x 10 mm clamping rail made of nickel-plated brass
- With contact-secure series terminals made of electrogalvanised steel
- Cover and rail stands made of grey polystyrene
- Sealable / labellable cover
- Lightning current carrying capacity 100 kA (10/350)
- Tension clamp with screw lock against self-loosening (e.g. required in industry)

Connection options:

- 11 single or multi-wire cables 2.5–25 mm² or fine-wire cables to 16 mm² (max. Ø 7 mm)
- 2 single or multi-wire cable 25–95 mm² or fine-wire cable to 70 mm² (max. Ø 13.5 mm)

CuZn
37 Brass

Master data

Item number	5015680
Type	1801 FIN
Description 1	Equipotential busbar
Manufacturer	OBO
Dimension	188mm
Material	Brass
Smallest sales unit	1
Unit of quantity	Piece
Weight	55 kg
Weight unit	kg/100 pc.

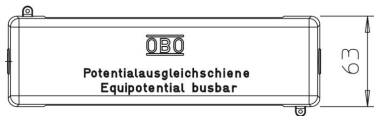
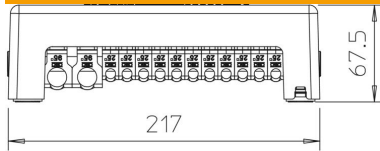
Technical data sheet

Equipotential busbar for indoors



Item number: 5015680

Dimensions



Technical data

Quantity of cable connections up to 25 mm ² , rigid	11
Quantity of cable connections up to 95 mm ² , rigid	2
Version for	With cover hood
Type	Modular structure
Insulator	yes
Surface of the terminal	Electrogalvanised
Surface of the contact rail	Nickel-plated
Material of the terminal	Steel
Material of the contact rail	Brass