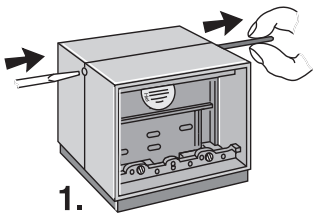
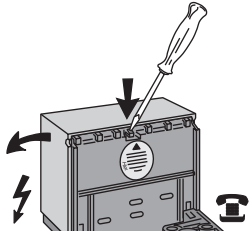


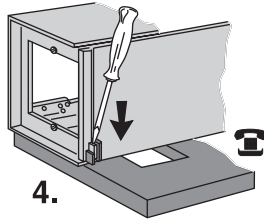
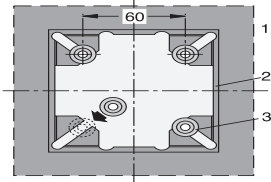
Öffnen des *LeU tank*[®]
Dismantling of *LeU tank*[®]



1.

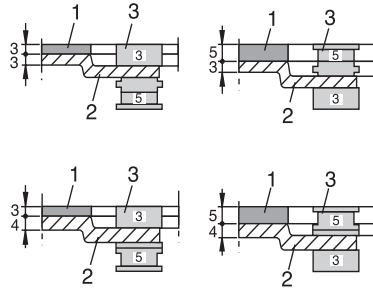


3.
 Typ: T4B
 T6L

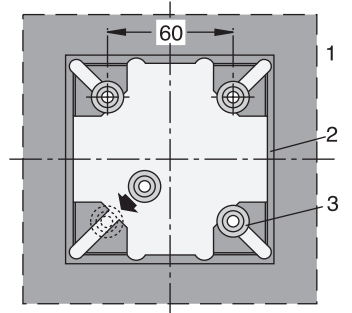
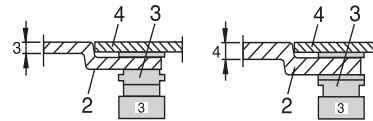


4.
 Typ: T12L

***LeU tank*[®]-Montage mit T/EM**
***LeU tank*[®] Assembly using T/EM (nut)**

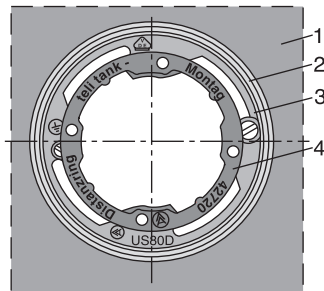
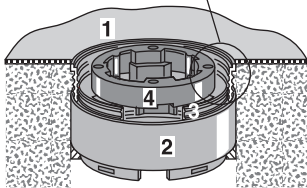
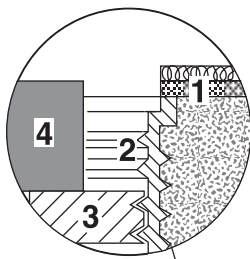


Blindplatten-Montage
Assembly of blanc plates



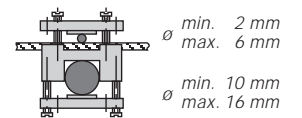
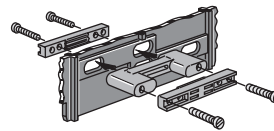
- 1 Bodenbelag
Floor covering
- 2 Führungs-Zunge
Nut guiding slot
- 3 Einsetzmutter
Screw nut
- 4 Blindplatte
blanc plate

***LeU tank*[®]-Montage auf Kanalauslass**
***LeU tank*[®] Assembly on Underfloor Trunking**

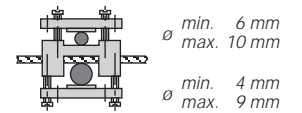
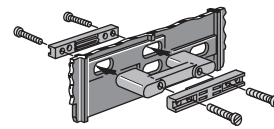


- 1 Bodenbelag
Floor covering
- 2 Kanalauflage
Coupling ring
- 3 Montagering
Adjustment ring
- 4 Distanzring
Spacer

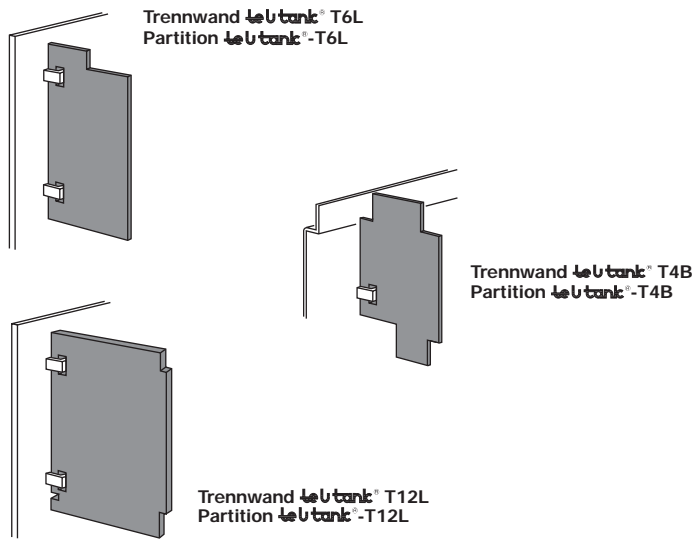
***LeU tank*[®]-Zugentlastung**
***LeU tank*[®] cable clamp**



***LeU tank*[®]-Trennwand**
***LeU tank*[®] Partition**

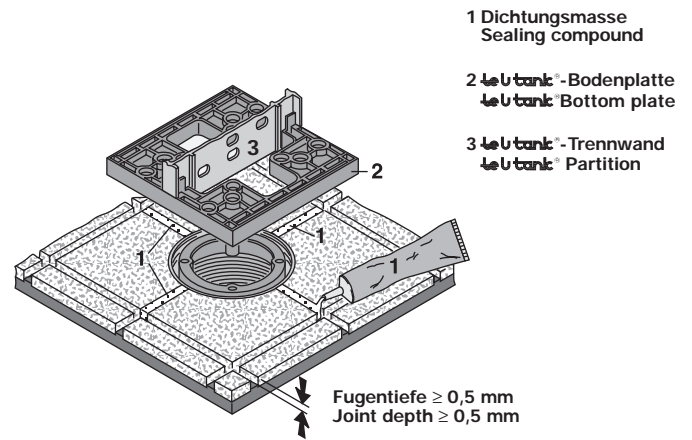


Querabschottung der **leU tank**[®]-Abteile
Internal segregation of **leU tank**[®]



leU tank[®]-Montage über Bodenbelagsfugen bei nass
gepflegten Fußböden

leU tank[®]-Assembly on washable tile floors



Novar GmbH
Wehrstraße 2
D-51645 Gummersbach
Tel.: (0 22 61) 83-0
www.novar.de/ackermann

Umweltfreundlich gedruckt
auf 100 % Recyclingpapier



42614 J Ausgabe 04
© Novar 2004

leU tank[®]

Montageanleitung
Mounting Instruction