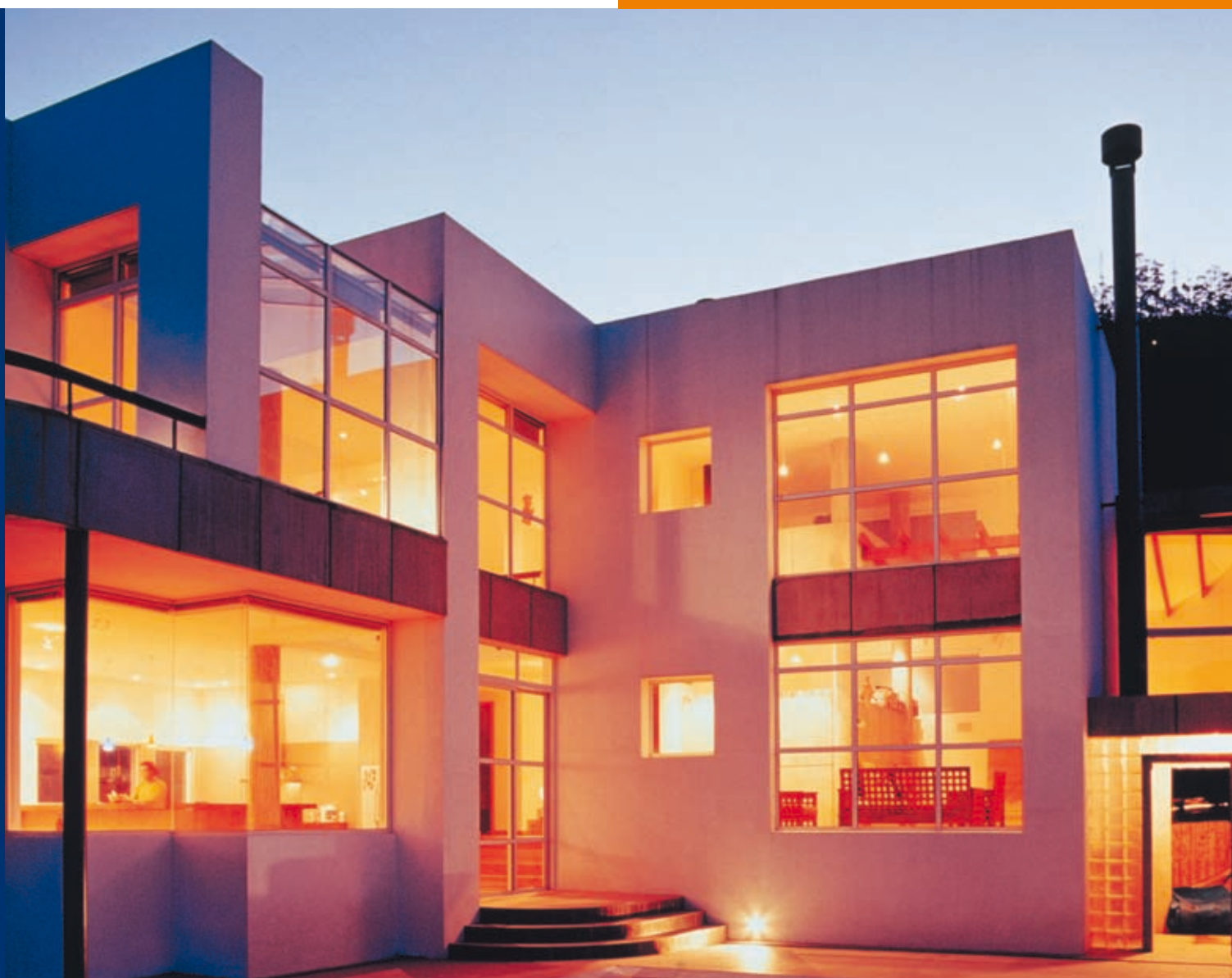


Complete solutions for underfloor installation

Compact & elegant

- fully equipped
- quickly installed
- high-quality design

UFS underfloor systems



ACKERMANN
CABLE MANAGEMENT

OBO
BETTERMANN

Design meets functionality

A world of ambience using underfloor systems

The OBO underfloor systems can supply data and power exactly where they are required. If few connections are required, there are complete solutions which completely remove the need for extension cables. Whether in the living room, a hallway or in exhibition areas – the connection cables disappear in a discreet device installation solution, whose elegant design adds value to the room. The eye of the beholder stays on the objects and the high-quality atmosphere of the room.



UDHome 4 | Private building, living room

Complete, fast, high-quality...

GESRM2

The round GESRM2 service outlet is a pre-fitted metal installation unit and is particularly suited to minimal connection requirements.

The scope of delivery contains a single socket. To the side of the socket, there is space for up to two connection sockets for data cables, as an option. The metallic installation unit can be supplied in four colour shades: nickel, chrome (shiny and black), old copper and old brass. Two versions are available for use in screed floors: with guide frame and with protective frame. The version with the protective frame is used for raised and cavity floors.

An additional benefit of the installation unit is that it can be wet-cleaned when closed.



Minimum installation depth: 70 mm.

GE2V

High-quality stainless steel gives the GE2V a fine appearance. Despite its small sizes, the GE2V has space for medium-sized connection requirements.

The square installation unit is intended for installation in screed floors. It can be used to install electrical devices in dry-cleaned cavity floors and screed floors. The scope of delivery contains a double socket. In addition, there are two empty spaces for snap-in modules for data cables.

Cable insertion takes place using installation pipes. There are a total of eight entries of size M25 available.



Minimum installation depth: 95 mm.

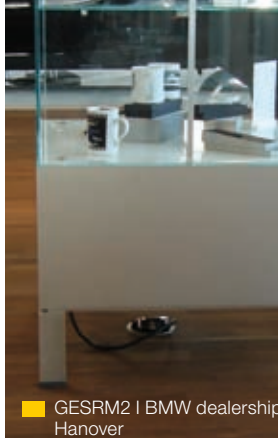
UDHome4

The design of the square UDHome4 installation unit is very compact. Its size means that it is particularly suited for high-quality connections.

Just one order number contains all the parts required for both mounting and use. The visible parts are made of stainless steel or brass. The unit permits the installation of electrical resources in dry-cleaned cavity floors or in screed floors. Pipelines are used for cable routing. Thus the box can be installed anywhere in the floor, even outside an existing underfloor system – a definite advantage for applications in private housing construction.



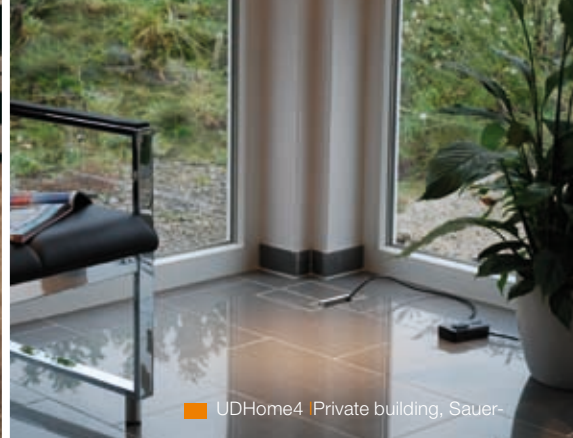
Minimum installation depth: 95 mm.



■ GESRM2 | BMW dealership, Hanover



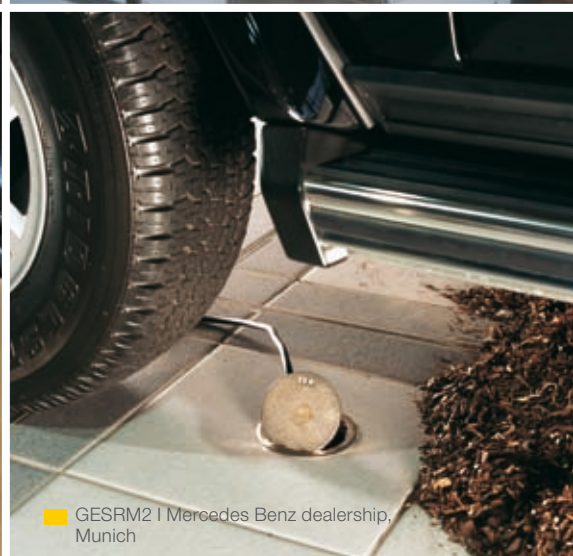
■ GESRM2 | BMW dealership, Hanover



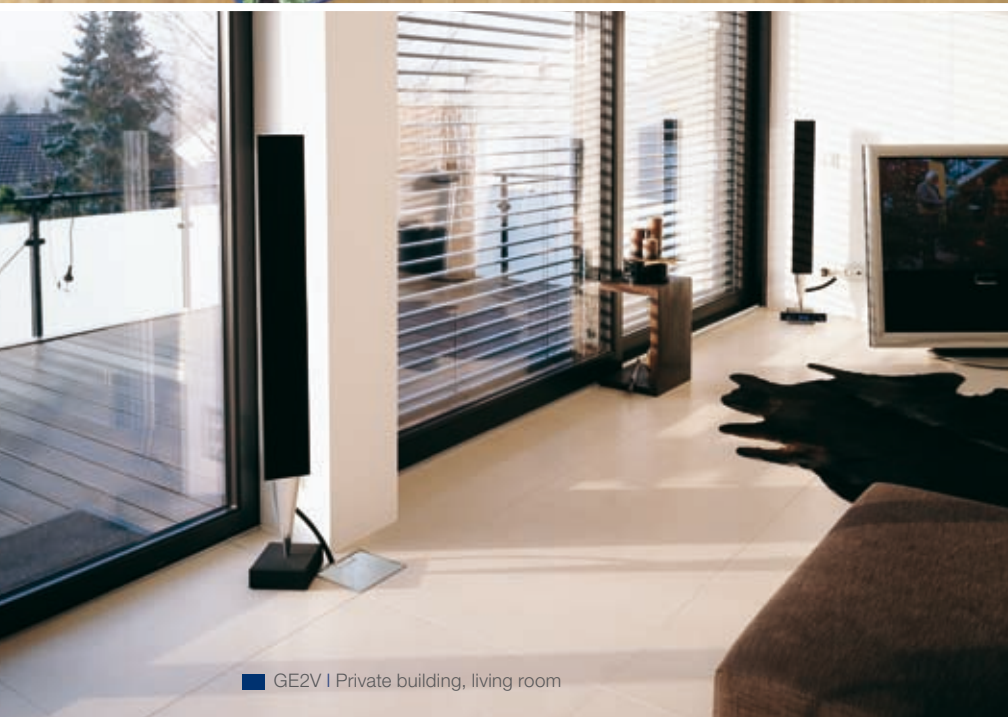
■ UDHome4 | Private building, Sauer-



■ UDHome4 | Meeting room



■ GESRM2 | Mercedes Benz dealership, Munich



■ GE2V | Private building, living room



■ GESRM2 | Mercedes Benz dealership, Munich



■ GESRM2 | Mercedes Benz dealership, Munich



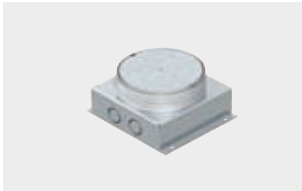
■ UDHome4 | Young person's bedroom, private building



■ GESRM2 | Bang & Olufsen, Pforzheim

Just right

High-quality design solutions give you attractive complete solutions for your customers. Various versions of device installation units pre-fitted with sockets provide the opportunity of providing connections to telephone/data networks in any location where they are needed. The OBO product range comprises various design and equipping variants. Equipped with single, double and triple sockets, OBO complete units can be used as independent individual solutions or as an addition to complex underfloor systems for various applications.



Underfloor outlet socket		
Screed height	Type	Art. no.
70 mm + 15 mm	UDL2-120/70	7408 55 8
80 mm + 15 mm	UDL2-120/80	7408 56 2
Device insert with protective frame including 1x single socket for UDL mounting		
Surface	Type	Art. no.
Nickel-plated	GESRN2USB	7405 70 8
Brass-coated	GESRMS2USB	7405 66 0
Copper-plated	GESRK2USB	7405 63 2
Chrome-plated	GESRC2USB	7405 59 6
Black chrome-plated	GESRSM2USB	7405 72 1
Device insert with floor covering contact frame including 1x single socket for UDL mounting		
Surface	Type	Art. no.
Nickel-plated	GESRN2UAB	7405 68 8
Brass-coated	GESRMS2UAB	7405 65 6
Copper-plated	GESRK2UAB	7405 62 8
Chrome-plated	GESRC2UAB	7405 59 2
Black chrome-plated	GESRSM2UAB	7405 72 3
Device insert with protective frame including 1x single socket for raised/cavity floor mounting		
Surface	Type	Art. no.
Nickel-plated	GESRN2HS	7405 67 6
Brass-coated	GESRMS2HS	7405 64 4
Copper-plated	GESRK2HS	7405 62 0
Chrome-plated	GESRC2HS	7405 58 4
Black chrome-plated	GESRSM2HS	7405 72 2
Mounting plates for GESR...		
for mounting of 2x	Type	Art. no.
MTRJ, AMP TYCO CAT6, GG45, 3M K6+K10	MPR2/2A	7407 62 0
BTR E-DAT, Dätwyler	MPR2/2B	7407 62 2
Siemon TERA, R&M Snap-In modules, SETEC CAT6	MPR2/2C	7407 62 4
Avaya MGS400	MPR2/2F	7407 62 6
1x XLR type D	MPR2XD	7407 63 4
Complete device insert, including 2x mounting box and 1x triple socket		
Material	Type	Art. no.
V2A	UDHOME4V/V	7427 00 0
Brass	UDHOME4M/V	7427 00 6
Complete device insert, including 1x double socket and 1x data carrier for 2x snap-in modules		
Material	Type	Art. no.
V2A	GE2V	7368 38 8

You can obtain additional information at www.obo-bettermann.com or by using the Customer Service number