

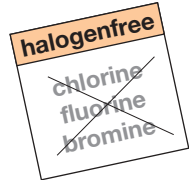
# OBO push-in and knock-in systems

Accelerate your installation work  
to top speed...

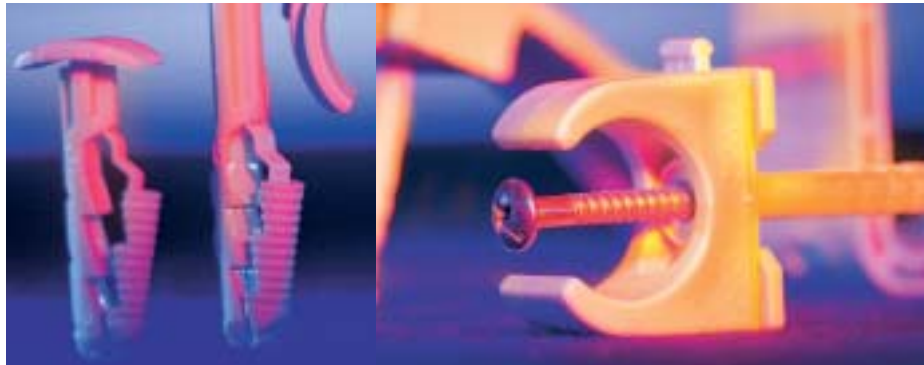


... for stress-free installation in minimum time.

OBO's innovative push-in and knock-in systems offer you installation solutions that give time savings of up to 50%.



You know what counts in day-to-day work on a building site: clean, efficient working. So: put your foot down. Innovative OBO push-in and knock-in systems combine perfect installation and time-saving.



## OBO push-in systems **Drill. Push in. Done.**



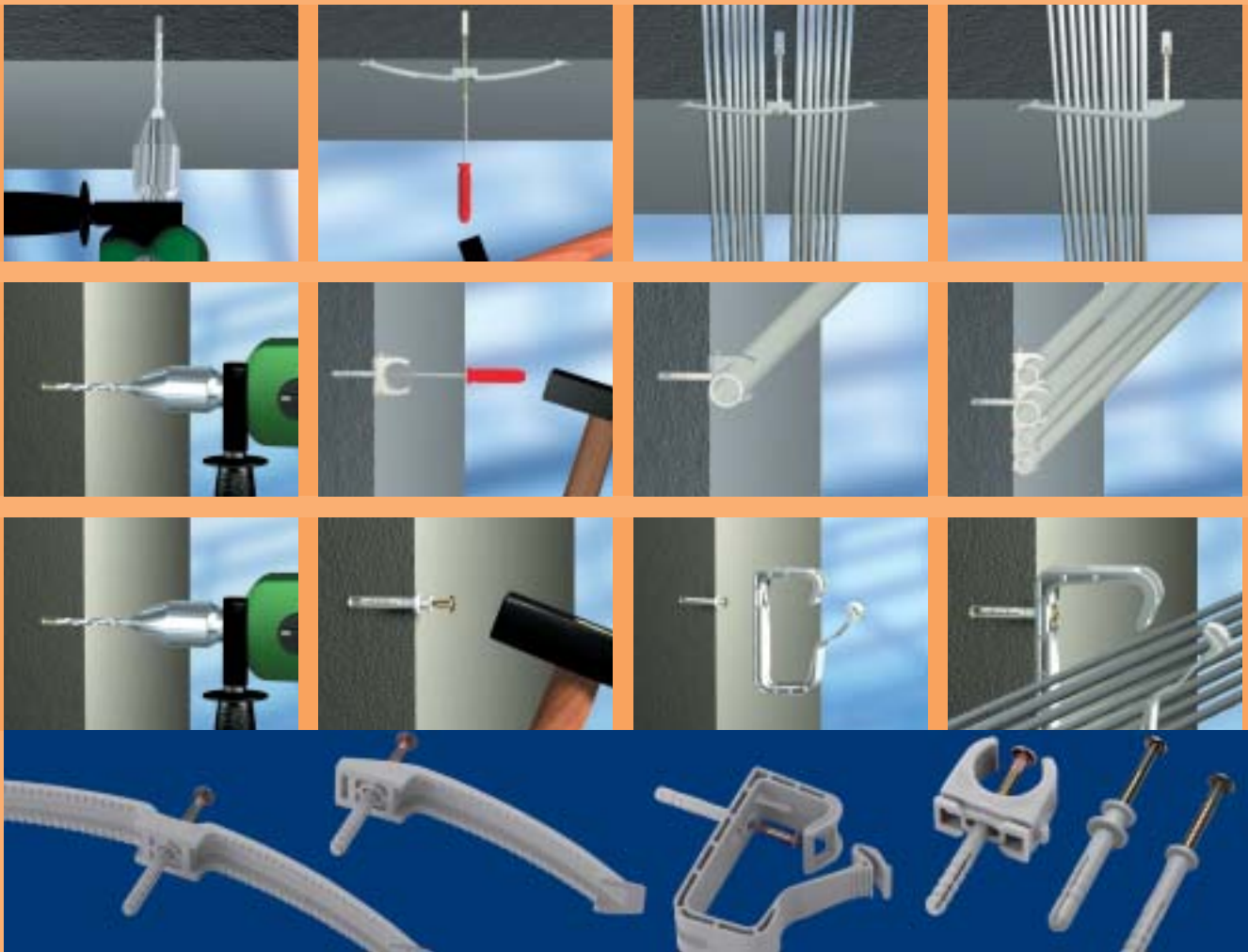
Suitable for all dense building materials



Tabelle Steck-Systeme

Tabelle Schlag-Systeme

OBO knock-in systems  
**Drill. Knock in. Done.**



OBO knock-in systems  
**No pre-drilling. Knock in. Done.**




## Overview of other OBO systems:



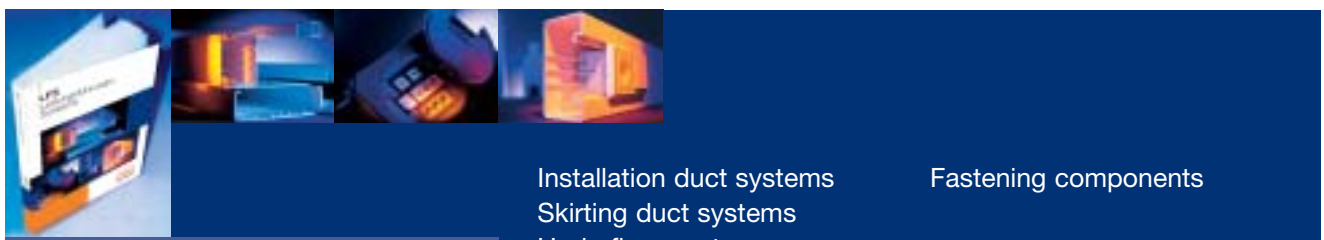
**VBS**  
Connection and fastening systems

- Connection systems
- Fastening systems
- Flange clamp systems
- Rail systems
- Screw and hammer systems
- Earthing systems
- Equipotential systems
- Lightning protection systems
- Overvoltage protection systems



**KTS**  
Cable support systems

- MKS/SKS and RKS cable support systems
- Installation systems
- Cable tray systems
- GKS cable tray systems
- Cable ladder systems
- Luminaire support duct systems
- Construction kit systems
- Vertical ladder systems
- Stainless steel components
- Fire protection systems



**LFS**  
Cable routing systems

- Installation duct systems
- Skirting duct systems
- Underfloor systems
- Fastening components