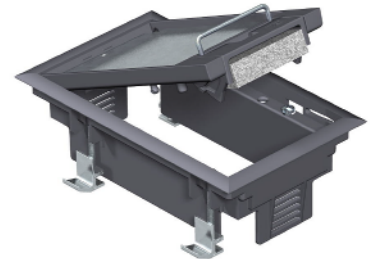


Data Sheet

Service outlet

1 Product Description

1.1	Type	GES2DB
1.2	Article No.	7405100, 7405104, 7405108, 7405112
1.2a	AA Order-No.	30700A1, 30700F1, 30700E1, 30700C1



2 Description

Service outlet for raised floor,

acc. to DIN VDE 0634 part 1, for installation in raised floor in dry rooms with dry cleaned floor, consisting of:

- carpet protection frame inclusive 4 fixing brackets for raised floor,
- mounting box insertion frame with ladders for stepped lowering the mounting box in 5 mm steps to max. 20 mm,
- hinged lid, captive, lockable and self-closing in carpet protection frame with a stable pressure absorption plate and a swivellable cord outlet with foam seal and a lowerable handle for opening the lid.

3 Technical Data

3.1	Material	PA6, surface matte
3.2	Colour (visible surfaces)	..100 = RAL 7011; ..104 = RAL 9011; ..108 = RAL 1019; ..112 = RAL 8014
3.3	Outer dimension	194 x 118 (L x W in mm)
3.4	Req. installation opening	181 x 105 (L x W in mm)
3.5	Recess	5 mm in the lid
3.6	Min installation depth	70 mm
3.7	Weight	0,66 kg
3.8	Standard	DIN VDE 0634 part 1
3.9	Approval	VDE

4 Application

4.1	Application	Raised floor, dry cleaned floor covering
4.2	No./Type of mounting box	1 x GB2
4.3	No. of Modul 45 devices	3 pieces
4.4	No. of standard devices	2 pieces with mounting ring or mounting bracket